



2026

DAR AL RIYADH

خمسون عاماً من التميّز
FIFTY YEARS OF EXCELLENCE



OUR CORE VALUES

People, Accountability, Collaboration, Trust and Integrity, Excellence

DIRECTS OUR BEHAVIORS AND EFFORTS TOWARDS ACHIEVING
SUCCESS AND SUSTAINABILITY

Company Profile

www.daralriyadh.com



خمسون عاماً من التميّز
FIFTY YEARS OF EXCELLENCE

Online Profile

This profile covers Core Value and Operational aspects of DAR AL RIYADH and is issued in Arabic and English.

The print version is identical to its PDF counterpart and is available at www.daralriyadh.com. In the event of any discrepancy, the Arabic version prevails.



HQ ADDRESS

Building No. 8616, Salah Al Din Al Ayoubi Road,
Al Dhubbat District P.O. Box 12623,

Riyadh,
Kingdom of Saudi Arabia

CONTACT DETAILS

Phone: +966 (011) 277 5911
Fax: +966 (011) 206 0099

info@daralriyadh.com
www.daralriyadh.com

Disclaimer

This corporate profile is for informational purposes only and may be updated without notice. While accuracy is prioritized, DAR AL RIYADH makes no warranties regarding the completeness or applicability of this information.

All photos, trademarks, logos, and intellectual property remain the property of their respective owners and are protected by all applicable intellectual property rights.



TABLE OF CONTENTS

01 About Us

An engineering and business consulting firm driven by a vision that extends beyond technical solutions, emphasizing strategic expertise and impactful innovation.

02 Our Values

DAR AL RIYADH is a customer-centric company where our ultimate concern is the value we deliver through our services and solution.

03 Services

DAR AL RIYADH proudly boasts the experience and expertise of the highest level resources in a multitude of industries.

04 Partnering

Driving innovation and shared success through strategic partnerships that foster long-term growth, adaptability, and resilience.

05 Project Experience

With a strong history of impactful projects, this section highlights expertise in strategic execution, innovation, and effective leadership across various domains.



OUR VISION

To be the Consultant of Choice in our chosen markets.

OUR PURPOSE

Inspired by Vision 2030, we deliver sustainable built environment by adopting latest technologies, benchmarking against best practice, and challenging industry accepted norms.

LONG-TERM STRATEGIC RESULTS

- Achieve leadership position in selected markets.
 - Win client recognition for service quality.
 - Become the *Employer of Choice* for the best talent in our industry.
-

CORPORATE BEHAVIOR

We uphold our responsibility to the community through targeted philanthropic initiatives and active volunteer engagement. Sustainability remains integral to our operations as we continually implement responsible business practices to minimize our environmental impact.

We are committed to fostering an inclusive and equitable environment, ensuring all stakeholders are treated with fairness and respect, regardless of background. Diversity drives innovation, and we value the unique perspectives that contribute to collective success.

Transparent and open communication is at the heart of our approach, which strengthens trust and fosters long-term relationships with clients, partners, and stakeholders.

CORPORATE CULTURE

At DAR AL RIYADH, we protect and strengthen our culture of transparency, integrity, and mutual respect in all interactions. We are committed to fostering an inclusive workplace where fairness and dignity define our engagement with stakeholders, regardless of position or background. Diversity is a cornerstone of our success, ensuring that every perspective is valued and contributes to meaningful progress.

Innovation drives our corporate ethos. We empower our employees to challenge conventional boundaries, explore new opportunities, and embrace forward-thinking solutions. Guided by ethical principles and professionalism, we conduct our business with the highest standards of accountability and excellence.



CHAIRMAN MESSAGE



At DAR AL RIYADH, we are keen not only to compare ourselves with our competitors, but more importantly, to compare ourselves with international standards.

What distinguishes our business approach our ability to adapt to the changing environment, and implement the latest professional practices and technologies while maintaining our principles and values.

- We believe every employee has the right to work in a safe, respectful, and ethical environment.
- We are proudly 100% Saudi owned.
- We bring international expertise and local insights.
- We deliver sustainable built environment by challenging industry accepted norms.

PRINCE TURKI BIN ABDULLAH BIN ABDULRAHMAN

Founder and Chairman



People are everything in a services company ... People who share the same culture and core values, live them, and apply them will persevere in the future.

PRINCE MOHAMMED BIN TURKI AL SAUD

Vice Chairman



ABOUT DAR AL RIYADH

DAR AL RIYADH IN NUMBERS

Over the past 50 years, DAR AL RIYADH has evolved into a fully integrated, value-added engineering and project management company with over 2,000 employees providing a wide range of professional services.

Our centers of excellence serve all prime sectors of the Kingdom, from oil and gas to transportation, education, and healthcare, with an array of value-added services, including engineering, construction management, industrial systems, client support services, and geomatics.



50

YEARS OF EXCELLENCE



100%

SAUDI-OWNED



40%

SAUDI-TALENT



52%

NATIONAL LOCAL-CONTENT



105^B ₪

CONSTRUCTION VALUE



2,000+

EXPERTS & SPECIALISTS



DAR AL RIYADH was established in 1975 to meet the growing demand for engineering and construction supervision services in Saudi Arabia. Over the fifty years since its founding, the company's business has grown and expanded to become one of the largest leading national companies providing planning, engineering, construction supervision, project management services, and strategic programs.

DAR AL RIYADH provides many services, including the design of master plans, and urban, and engineering designs, in addition to engineering services in the sectors of petrochemicals, infrastructure, industrial facilities, telecommunications, environmental services, facilities, and community projects, starting from preliminary studies and site inspections until the preparation of contract documents, specifications, and tender documents, and passing through the supervision of executing construction until projects are successfully delivered.

With over 2,000 employees, the company boasts a diverse workforce that is a testament to our commitment to exclusivity and global collaboration. This diversity, spanning different backgrounds, nationalities, skill sets, and experience, enables us to provide a full range of client project requirements, including residential, commercial,

hospitality, community, education, healthcare, and infrastructure projects. The level of Saudization is among the highest in the industry, further demonstrating our dedication to the local community.

Since its establishment, the work teams at DAR AL RIYADH have devoted millions of working hours to providing high-quality services that not only meet but exceed the goals and aspirations of its customers. The secret to DAR AL RIYADH's success lies in its unwavering commitment to the standards of excellence outlined in the DAR AL RIYADH Compass. This commitment is reflected in our careful planning, meticulous execution, and continuous self-criticism of our professional practice. We continue to invest in training and development and new and advanced systems and technologies to maintain this high standard.



**CLIENT
SATISFACTION**

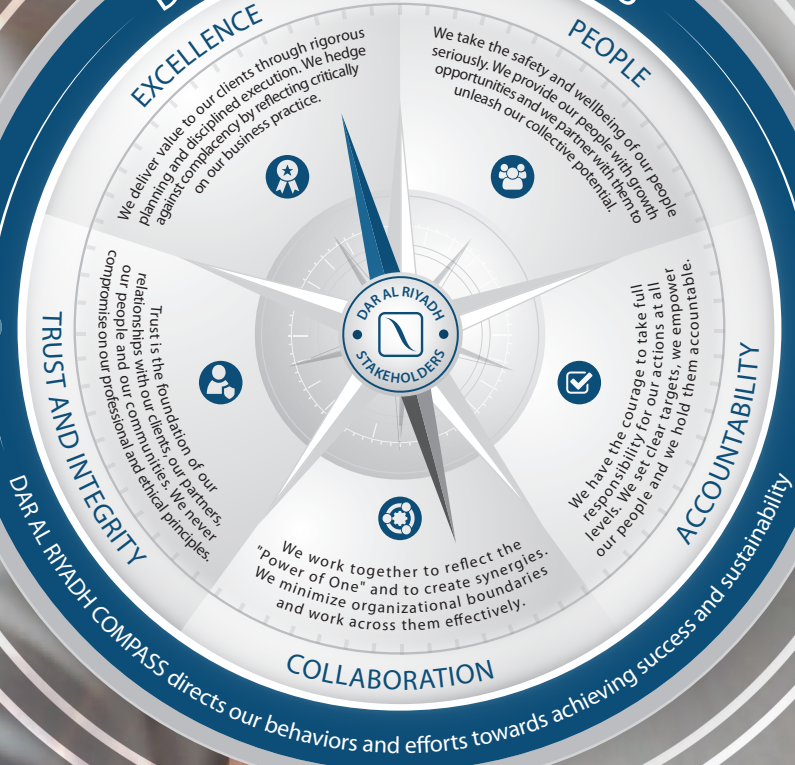


**NET PROMOTER
SCORE**



**EMPLOYEE
TENURE**

DAR AL RIYADH COMPASS





What distinguishes DAR AL RIYADH is its ability to renew itself in response to the dynamic business environment and its commitment to adopt the latest professional practices and technologies while maintaining its core principles and values.

ABDULLAH AL MUSTANEER
CEO and Board Member



DAR AL RIYADH PURPOSE

UNIQUE VALUES

DAR AL RIYADH's ambition is to deliver a sustainable built environment for and with Saudi nationals by doing projects right and challenging the accepted.

DAR AL RIYADH has the ambition to become one of the leading companies in the field of professional value-added services. Surpassing client expectations and developing people are critical success factors for a durable client relationship.

Accordingly, DAR AL RIYADH has embarked on programs encompassing human resource practices and development, focusing on acquiring and grooming local talent and client-engaging processes, creating longterm client satisfaction, and lasting experiences.



DAR AL RIYADH CORE VALUES

DAR AL RIYADH'S COMPASS

DAR AL RIYADH's Compass represents our core values that are expected to be exemplified by our people in their daily business practice. DAR AL RIYADH's Compass directs our behaviors and efforts towards achieving success and sustainability.



PEOPLE

We take the safety and well-being of our people seriously. We provide our people with growth opportunities and we partner with them to unleash our collective potential.



TRUST & INTEGRITY

Trust is the foundation of our relationships with our clients, our partners, our people and our communities. We never compromise on our professional and ethical principles.



ACCOUNTABILITY

We have the courage to take full responsibility for our actions at all levels. We set clear targets, we empower our people and hold them accountable.



COLLABORATION

We work together to reflect the "Power of One" and to create synergies. We minimize organizational boundaries and work across them effectively.



EXCELLENCE

We deliver value to our clients through rigorous planning and disciplined execution. We hedge against complacency by reflecting critically on our business practice.

DAR AL RIYADH ROLE IN VISION 2030

SAUDI VISION 2030

As Saudi Arabia undergoes rapid economic and social transformation, guided by Vision 2030, DAR AL RIYADH continues to grow and actively contribute to the country's success by supporting the many investment programs in the infrastructural segments.

Beyond the legal requirements, we are also committed to nurturing and growing local talent essential for local communities' social and economic development. We aim to attract and retain ambitious, high-caliber graduate and experienced candidates for all engineering disciplines, including project and construction management. We provide comprehensive training programs and mentoring for graduates. In addition, we train young Saudi nationals to enhance their job skills and facilitate employment at the end of the training. Today, DAR AL RIYADH employs around 40% of Saudi Nationals and is a leader in the industry.

VISION 2030 PILLARS

A VIBRANT SOCIETY

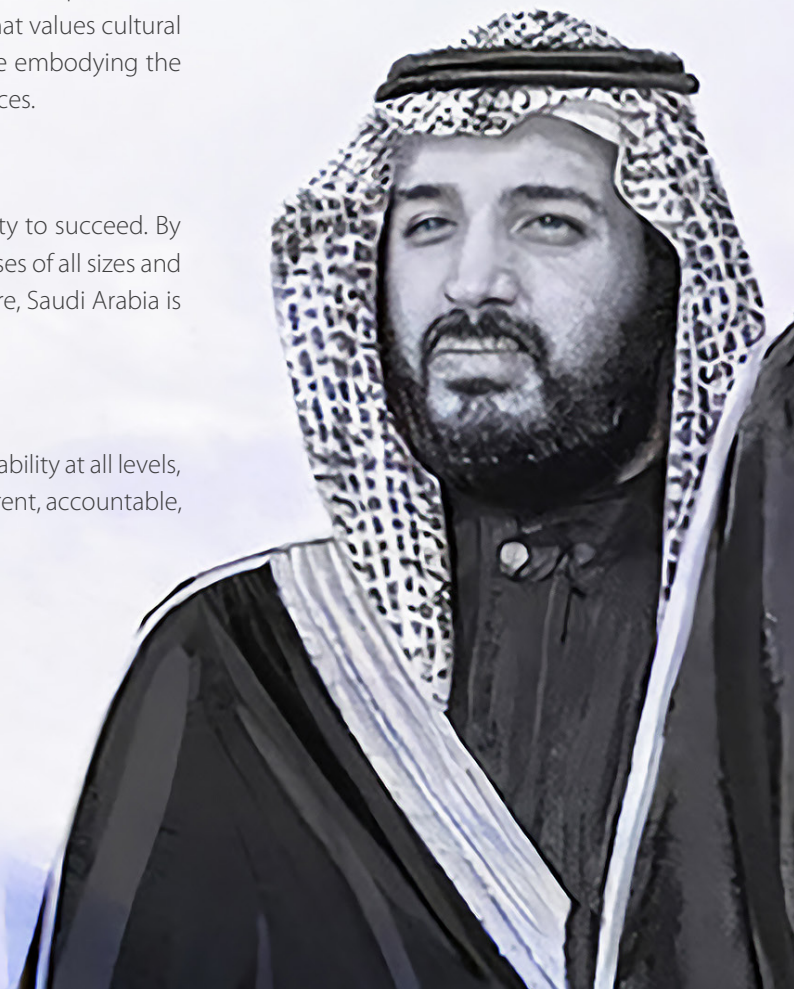
A Vibrant Society in which all citizens can thrive and pursue their passions. A strong social infrastructure is underpinned by a society that values cultural traditions, national pride, and modern amenities all while embodying the spirit of modern Islam and providing effective social services.

A THRIVING ECONOMY

A Thriving Economy where everyone has the opportunity to succeed. By providing a supportive business environment for businesses of all sizes and investing in education to prepare for the jobs of the future, Saudi Arabia is creating an exciting and prosperous future for all.

AN AMBITION NATION

An Ambition Nation committed to efficiency and accountability at all levels, including building a government that is effective, transparent, accountable, empowering, and high-performing.







PRINCE TURKI BIN ABDULLAH AL SAUD

Founder and Chairman

Prince Turki began his career in the government sector before recognizing the growing demand for professional engineering services. In February 1975, he founded DAR AL RIYADH with a vision to establish it as a leading brand in professional engineering services.

Over four decades as CEO, he guided the Company's organic growth and strategic joint ventures, ensuring strong leadership position in the Saudi market.

Central to DAR AL RIYADH's success is its guiding principles, collectively known as the COMPASS, which Turki championed in both vision and practice. His leadership emphasized sustainability, responsible business, and social impact, shaping the organization beyond shareholder value.

Key Leadership Positions:

- Founder & CEO, DAR AL RIYADH Group (1975–2019)
- Chairman, DAR AL RIYADH Group (2020–Present)
- Chairman, Saudi Arabian Parsons Limited (2011–Present)
- Chairman, Wipro Arabia Limited (2006–Present)
- Founder & Chairman, Safaah Foundation (2011–Present)



PRINCE MOHAMMED BIN TURKI AL SAUD

Vice Chairman

Prince Mohammed served as CEO of DAR AL RIYADH (2020–2022), guiding the company through the COVID-19 challenges while reinforcing its corporate culture and long-term strategy. Previously, as Company President, he led operations and growth initiatives, streamlining business functions and fostering collaboration. His career includes leadership roles in engineering, architecture, and business analysis, along with international experience at Shell Overseas Services.

Beyond DAR AL RIYADH, he holds key board positions in Massadr HR Services, SAPL, WAL, CBRE, and TIDAREC, driving governance and strategic partnerships. Academically, he earned a B.A. in Economics from Swarthmore College and a Global Master in Management from LSE (2017), strengthening his expertise in international business and leadership.

He also serves as a Board Member for several JV entities, including.

- SAPL (Saudi Arabian Parsons)
- WAL (Wipro Arabia Limited)
- CBRE (CBRE Saudi Arabia)
- TIDAREC (Technip Italy & DAR Engineering Consultancy Company)



H.E. ENG. IBRAHIM AL OMAR

Independent Board Member

His Excellency Eng. Ibrahim Al-Omar has been the Director General of Saudi Airlines since October 2020 and a board member since June 2020. Prior to this, he served as Governor of the Saudi Arabian General Investment Authority (2017–2020) and CEO of Bahri (2014–2017), leading key strategic initiatives.

His career began in telecom, where he spent 18 years managing global projects. At STC, he rose to Vice President of the business unit before becoming CEO of VIVA Bahrain. He later held senior roles at Mobily, specializing in strategic alliances and development.

Eng. Al-Omar holds a bachelor's degree in Electrical Engineering from King Fahd University of Petroleum and Minerals. With expertise in ICT and logistics, he also completed the leadership development program at Harvard Business School. His extensive experience in corporate strategy, operations, and partnerships continues to drive impactful leadership at Saudia.



Mr. ROBERT PRIETO

Independent Board Member

Mr. Robert Prieto is a recognized leader in the engineering and construction industry, specializing in business strategy execution. Since 2015, he has served as Chairman and CEO of Strategic Program Management LLC. Previously, he held senior leadership roles, including Senior Vice President of Strategy, Marketing, and Operations at Fluor Engineering and Construction (2004–2015) and Chairman of Parsons Brinckerhoff (1997–2003).

His influence extends across industry boards, having served on Mott MacDonald, Cardno, the Construction Management Association of America, and the National Academy of Construction.

Mr. Prieto holds both a Bachelor's and Master's degree in Nuclear Engineering from New York University. A prolific author, he has written over 600 papers and publications on management, leadership, ethics, and engineering, including eight books such as Strategic Program Management and The Giga Factor: Program Management in the Engineering and Construction Industry. His expertise continues to shape industry innovation and strategic leadership.



Mr. THOMAS KURUVILLA

Independent Board Member

Mr. Thomas Kuruvilla is a global board member of Arthur D. Little, the world's first management consulting firm, overseeing its Middle East operations. He also leads the Strategy and Organization practice in South Asia and the Middle East. Since joining Arthur D. Little in 1998, he has managed its Singapore operations and driven major public sector transformations in economic development and digital innovation across transport, telecoms, healthcare, and real estate.

Kuruvilla has worked extensively with Middle Eastern family conglomerates, guiding their strategic growth and serving on several corporate boards. He is also a faculty member at leading Indian Institutes of Management (Ahmadabad, Bangalore, and Udaipur), where he teaches international business strategy and governance. Additionally, he is part of the Industry Advisory Panel at S P Jain School of Global Management.

He holds a Bachelor's degree in Electrical and Electronics Engineering from Kerala University and an MBA from Melbourne Business School. Earlier in his career, he worked at Larsen & Toubro and was selected as a Pilot Officer for the Indian Air Force.



Mr. ABDULLAH AL MUSTANEER

CEO and Board Member

Mr. Abdullah Al Mustaneer became CEO of DAR AL RIYADH in January 2023, leading the implementation of Company's strategy alongside the business leadership team. He is dedicated to driving growth, operational excellence, and fostering a strong corporate culture that aligns with the company's long-term vision. He also maintains key relationships with strategic clients and partners.

Since joining DAR AL RIYADH in 2014 as Group Human Resources and Shared Services Director, he has led the human resources transformation program that enhanced employee engagement, talent development, Saudization, HR service quality, and performance management. He also played a key role in institutionalizing DAR AL RIYADH COMPASS, reinforcing the company's core values.

Before DAR AL RIYADH, Abdullah spent 11 years at Saudi Aramco, providing HR advisory across upstream, downstream, and engineering sectors.

He holds a Bachelor of Science in Business Management from the University of Arizona and has multiple professional certifications across various business disciplines.



DAR AL RIYADH PEOPLE & CULTURE

PEOPLE & CULTURE

At DAR AL RIYADH, we define our culture as the nexus of Our People, Leadership, and Core Values represented in DAR AL RIYADH's COMPASS. We take a deliberate approach to the vital business processes that influence our ability to shape and strengthen the people-centered and high-performance culture that we are known for.

ROBUST INTERNAL COMMUNICATION

Internal communication is one of the essential enablers of our high-performance culture. An organization communicating effectively with its people will shape a productive, high-performance culture.

At DAR AL RIYADH, we developed a set of effective internal communication channels to help facilitate the seamless flow of information, expectations, and challenges from the business leadership team to the front-line and from the front-line to the business leadership teams.

By effectively using these channels, we developed the critical organizational competency of "organizational listening," making the people's VOICE the prime drive of our continuous efforts to shape and strengthen our high-performance culture.

DAR AL RIYADH UNIQUE CULTURE

The first step towards shaping the organizational culture is having a clear definition. At DAR AL RIYADH, we invested much time and effort in defining our culture using two dimensions.

The first dimension focuses on translating the five core values of DAR AL RIYADH COMPASS into a lived reality through our people's daily actions and decisions. We share the expected behaviors associated with each core value that matches their organizational level with our people. In addition, we communicate the expected behaviors in the top 5 languages that represent the mix of our local and international talent.

The second dimension focuses on breaking down the construct of culture into subcultures to help our people appreciate the various facets that come together to form our unique culture. These subcultures include the culture of continuous learning and growth, the culture of collaboration, the culture of accountability, the culture of knowledge sharing, and the culture of trust and integrity.

TESTIMONY TO THE QUALITY OF PEOPLE & CULTURE PROGRAM

In line with DAR AL RIYADH COMPASS, the value of excellence is that we always subject our business practices to the scrutiny of international standards set by the relevant professional bodies. Our People & Culture programs and practices are no exception. Our focus and commitment towards our people culminated in DAR AL RIYADH winning prestigious international awards.



STRUCTURED PEOPLE ENGAGEMENT AND DEVELOPMENT

At DAR AL RIYADH, people are integral to our value system, as in the DAR AL RIYADH COMPASS. We take the safety and wellbeing of our people seriously.

We provide them with growth opportunities and partner to unleash our collective potential. Our unwavering commitment to our People is reflected in our talent development programs, operational and strategic decisions, recognition programs, and holistic employment value proposition. We measure people's engagement every year and introduce carefully designed initiatives based on our people's valuable insights and feedback.

We developed different structured talent development programs, ranging from the Young Talent Development Program to the Leadership Development Program, to address our people's development goals at various stages of their careers. In addition to the structured talent development programs, we provide many learning and growth opportunities, including the self-development program, the specialized communities of practice, the corporate library, the technical exchange forums, and the DAR AL RIYADH PMP Marathon Program.

RIGOROUS LEADERSHIP SELECTION AND DEVELOPMENT

At DAR AL RIYADH, we believe leaders play an instrumental role in shaping the organization's culture. The collective behaviors, actions, and decisions of leaders at all levels reflect the company's culture.

This is the reason we take leadership selection and development seriously. We have established a rigorous process to help us identify and select great leaders whose values align with DAR AL RIYADH COMPASS and who have a real passion for developing themselves and their team members. Once selected and on-boarded, we work with our leaders to support them as they practice their roles as champions of DAR AL RIYADH culture.

One of our signature programs lies at the heart of our leadership development efforts. The "DAR AL RIYADH Manager Effectiveness Program" supports our leaders in developing the critical competencies that influence the quality of their relationships with their team members.



ESG COMMITMENTS

ETHICS & INTEGRITY

Trust is the foundation of our relationships with clients, partners, people, and communities. We never compromise on our professional and ethical principles.

We understand clearly that our success and reputation depend mainly on the actions of our people and the many decisions they make as they endeavor to deliver value and exceptional results to our clients.

Over the past 50 years, our people worked individually and collectively to help us earn the trust of our clients, partners, employees, and potential talent. This unwavering commitment to the highest ethical and professional standards created our well-established reputation as the Company that never compromises on its principles and values. When it comes to shaping and reinforcing our culture of integrity, we share a deep-seated belief that every single one of DAR AL RIYADH employees is a LEADER despite the position they hold in the organization.

WE DEVELOPED OUR OWN CODE OF CONDUCT TO:

- Provide essential information and tips about DAR AL RIYADH's minimum behavioral standards.
- Encourage our people to seek the advice of their direct manager, colleagues, or the assigned HR Business Partner when confronted with an ethically challenging situation.
- Help our people identify ethical and compliance issues that could be encountered on and off the job.
- Guide our people in resolving the identified issues per the company's policies and the applicable laws and regulations.

We expect and encourage all our people to make it a top priority to read, understand, and adhere to the minimum behavioral standards provided in DAR AL RIYADH's Code of Conduct; We create a safe space for all our people to challenge any unethical, dishonest, unacceptable, or questionable behavior.

To further strengthen our culture of integrity, we implemented our world-class Ethics and Compliance Program in cooperation with The Ethisphere Institute, the global leader in defining and advancing the standards of ethical business practices that fuel corporate character, marketplace trust, and business success. This program is not merely a collection of policies and procedures but an all-encompassing and holistic approach that cuts

across all business practices to make ethical conduct part of how we do business at all levels. In addition to the standalone policies translated into multiple languages, the program is carefully designed to provide practical tools to help our leaders and their team members play a critical role in protecting the interests of our valued clients and stakeholders.

DIVERSITY

At DAR AL RIYADH, we mainly base our behaviors and actions towards our people on their “voice”. We commit to an inclusive environment that accepts a diverse workforce from all aspects of culture, nationality, faith, race, gender, and age... Consequently, this maintains integrity and credibility and enhances the reputation of all concerned.

At DAR AL RIYADH, we value our employees’ voices, ensuring that our decisions embrace and integrate all aspects of diversity within our corporate culture.

Our workplace stands as a model for successfully incorporating highly qualified international talent from across the globe while fully complying with Saudization requirements in support of Vision 2030.

Integrity and trust form the foundation of our Ethics and Compliance Program. We uphold a strict commitment to fairness, rejecting all forms of discrimination based on race, color, gender, age, or national origin. We firmly believe that fostering an environment built on mutual respect, collaboration, and performance leads to the success of our employees and the organization.

Recognizing the importance of the younger generation as the future leaders of DAR AL RIYADH, we have designed a specialized program dedicated to newly hired Saudi talent. Through this initiative, young graduates participate in a structured mentoring program that equips them with the essential knowledge and competencies required to thrive within our organization.

SUSTAINABILITY

At DAR AL RIYADH, we constantly evaluate how we can operate more sustainably. We follow incremental steps to ensure that our commits are realistic within the context of our business, without compromising progress towards tangible achievements.

We recognized that the vision of what our business will be, and the impact that it will have in the future, is simply not possible without embedding sustainable decision making into every process undertaken at DAR AL RIYADH. We have developed an ambitious roadmap for setting tangible goals, and we are excited about the impact that we will have across our value chain over the next few years.

For each step of our journey, we are fully transparent. We involve all stakeholders when planning and designing policies and initiatives. Communication is the lifeblood of our transformative culture, ensuring that everyone is informed about the status quo, and empowered to contribute individually or as groups.

- **2023 | Data mapping: Scope 1, 2 and 3 business travel emissions**
- **2024 | Materiality and impact assessment**
- **2025 | ESG Sustainability Strategy update**
- **2026 | Baselineing, decarbonization, and data tracking**
- **2027 | ESG Disclosure and supply chain decarbonization**



HEALTH & SAFETY

DAR AL RIYADH upholds an unwavering commitment to Health, Safety, and Environment (HSE) values and principles, fully aligned with local regulations, client expectations, and industry best practices. This commitment serves as a cornerstone for fostering a safer, healthier, and more responsible operational environment for all stakeholders. By prioritizing integrity and credibility, we reinforce our reputation and contribute to the collective trust of all involved.

Our people are our most valuable asset, and we rigorously adhere to our Health, Safety, Environment, and Quality Management System (HSEQ-MS). Continuously reviewed and refined, our HSEQ-MS ensures operational excellence and compliance with internationally recognized ISO standards. Embedded within our corporate culture, it drives our commitment to safety, sustainability, and quality at every level of our organization

ISO CERTIFICATIONS...



ISO QUALITY CERTIFICATE
ISO 9001:2015



ISO ENVIRONMENTAL CERTIFICATE
ISO 14001:2015



ISO HEALTH AND SAFETY CERTIFICATE
ISO 45001:2018



ISO 9001 - ISO 14001
ISO 45001
BUREAU VERITAS
Certification





The HSEQ department strategy aligns with the DAR AL RIYADH COMPASS, empowering the business to fulfill its commitment to protecting both our people and the environment, while delivering excellence through HSEQ innovation and improvement.

MALCOLM HAMILTON
Group HSEQ Director

SAFETY INTERNATIONAL CERTIFICATIONS...



INTERNATIONAL SAFETY AWARD
THE ROYAL SOCIETY FOR THE PREVENTION
OF ACCIDENT (ROPSA)



INTERNATIONAL SAFETY AWARD
BRITISH SAFETY COUNCIL

QUALITY

Quality is a fundamental pillar of DAR AL RIYADH, shaping the way we operate, deliver, and grow. Our DAR AL RIYADH Way & Quality Management System (QMS) establishes clear standards, streamlined processes, and cross-functional alignment to ensure excellence at every level. The HSEQ teams—across both corporate and operational functions—play a critical role in assuring performance by defining best practices, aligning with client expectations, and enabling delivery through technically proficient professionals. This commitment to quality is not a one-time achievement, but a continuous pursuit, validated by our sustained ISO certifications and trusted reputation within the industry for reliability, consistency, and service excellence.



دار الرياض
DAR AL RIYADH

OUR COMMITMENT

Guided by integrity and transparency, we proudly offer a distinctive local solution to drive the development and support of social, transport, and manufacturing infrastructure projects, contributing to the realization of Saudi Arabia's Vision 2030

رؤية
VISION
2030
المملكة العربية السعودية
KINGDOM OF SAUDI ARABIA



ADVISORY SERVICES



ENGINEERING AND DESIGN



PROJECT MANAGEMENT (PMC)



CONSTRUCTION SUPERVISION



GEOSPATIAL SERVICES (GIS)

DAR AL RIYADH SERVICES PORTFOLIO

BUSINESS FIELDS AND AREAS OF EXPERTISE

At DAR AL RIYADH, we offer a wide range of professional services including advisory services, engineering & design services, project management services, construction supervision services, and geospatial services. To meet our clients' evolving expectations, we ensure that our service offerings are focused on critical elements that deliver measurable value and guarantee successful project delivery. At the heart of our unique value proposition is a carefully selected project team carefully selected and highly engaged project teams that are fully empowered to deliver a world-class service.

The next few pages provide an overview of our value proposition and service offerings.

ADVISORY SERVICES

- ESG & Sustainability
- Digital & Smart Cities
- Asset & Facilities Management
- Infrastructure Finance

ENGINEERING AND DESIGN

- Technical Consultancy
- Urban and Master Planning
- Architecture
- Civil & Infrastructure
- Structure
- M.E.P.

PROJECT MANAGEMENT (PMC)

- Project Management
- Design Management
- Construction Management
- Contract & Commercial Management
- Operation & Maintenance
- Project Controls
 - Cost Management
 - Schedule Management
 - Risk Management
 - Document Control Mgmt.
 - Contracting & Procurement

CONSTRUCTION SUPERVISION

- Construction Management
- Construction Supervision
- Quantity Surveying
- Safety Supervision
- Training Academy & Certification

GEOSPATIAL SERVICES (GIS)

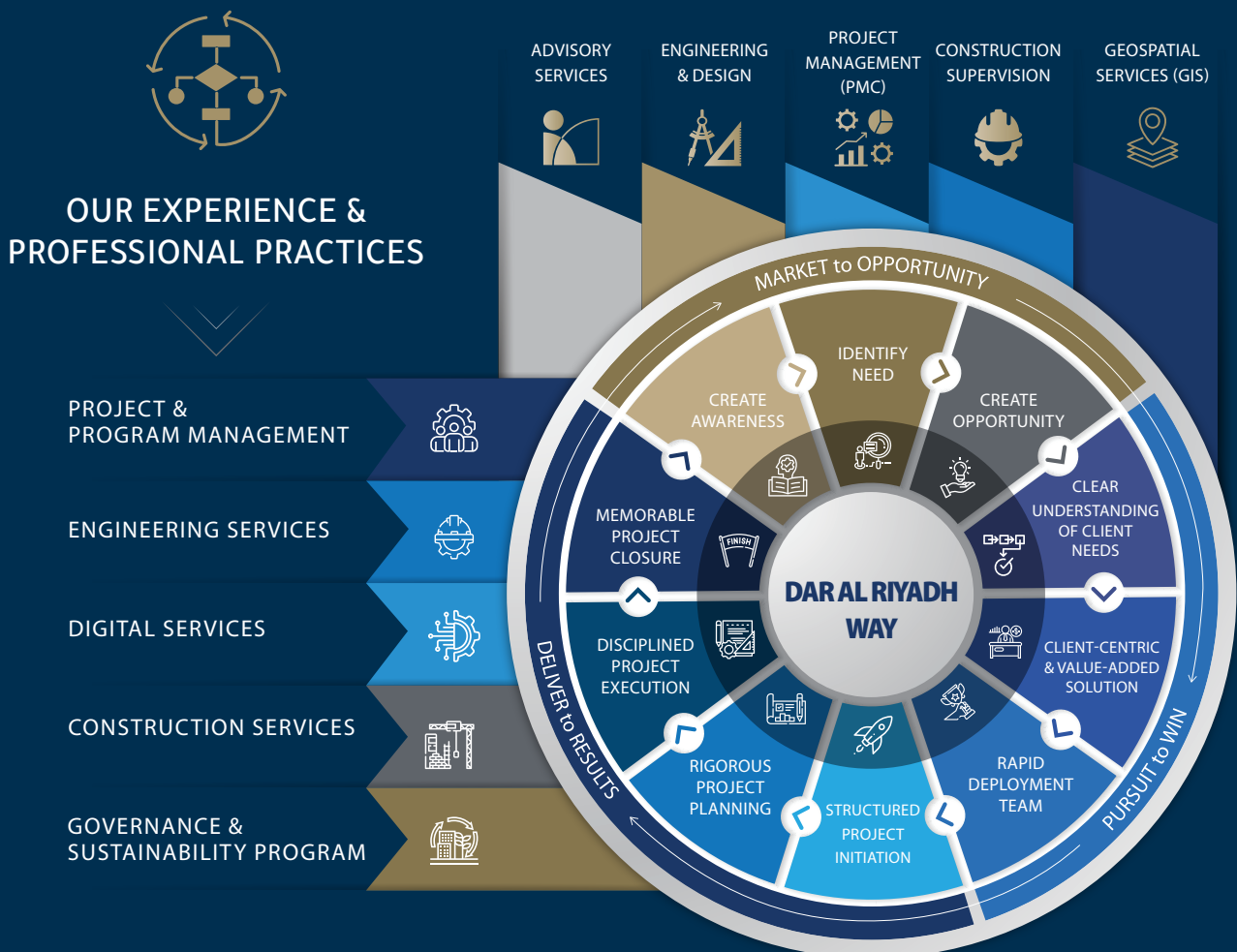
- Aerial – Drone Photogrammetry
- GIS Services & Applications
- Topography & Hydrology Surveying
- Digital Twin/ BIM GIS Integration
- Mobile Mapping & 3D Modeling
- Smart City Assessment & Planning

DAR AL RIYADH OPERATING MODEL

OUR CLIENT-CENTRIC VALUE PROPOSITION

At DAR AL RIYADH, we are committed to delivering excellence through client-centric leadership, ensuring direct engagement and empowering project teams with decision-making authority

- **Client-centric Leadership** focused on client engagement and project team empowerment. Decision makers on the ground.
- **Rapid Mobilization** supported by a worldwide network of talent acquisition partners.
- **Highest Employee Retention** in our industry (median tenure 9.3 years).
- **Operational Excellence** underpinned by world-class corporate governance (50% of our corporate board is independent).
- **Engaged Project Teams** measured and recognized against the highest performance standards. Our existing clients attest to the professional commitment of our project teams.
- **DAR AL RIYADH Boot Camp Program** ensures that our people embody our culture and brand.
- **Smart Digital Solutions** is carefully selected to augment our professional capabilities and enhance our unique value proposition.





ADVISORY SERVICES

For over five decades, DAR AL RIYADH has been a trusted provider of high-quality technical, project management, and construction management services across Saudi Arabia. Recognizing the evolving needs of its clients and the dynamic industry landscape.

Through this tailored approach, we provide strategic insights, innovative solutions, and data-driven methodologies to navigate complexities and drive informed decisions. By blending global best practices with local expertise.

DAR AL RIYADH has strategically expanded its service portfolio to encompass a specialized Advisory business line, delivering consultancy expertise in four key areas:

- **ESG & Sustainability**
- **Digital & Smart Cities**
- **Asset Management**
- **PPP & Infrastructure Finance**

ESG & SUSTAINABILITY ADVISORY

DAR AL RIYADH's ESG & Sustainability Advisory team offers a comprehensive suite of services designed to help organizations navigate environmental, social, and governance considerations while ensuring compliance with international standards. Within this division, the ESG & EHS Advisory services focus on:

- **Environmental Impact Assessments & Action Planning**, guiding businesses in mitigating risks while enhancing sustainability.
- **Regulatory Compliance Services**, ensuring alignment with LEED, IFC Performance Standards, and other global certifications.
- **Circular Economy Assessments**, optimizing resource efficiency and waste reduction.
- **Social Responsibility & Governance Strategy Development**, including CSR policy drafting and ethics compliance.
- **ESG Due Diligence & Advisory**, assisting organizations with lender technical advisory, M&A assessments, and ESG transitions for operations & facilities management.

SUSTAINABILITY ADVISORY SERVICES INCLUDE:

- **Strategic ESG Policy Drafting**, ensuring structured approaches to sustainability and risk management.
- **Life-cycle Carbon & Energy Analysis**, enabling businesses to assess the long-term environmental impact of their assets. Carbon & Energy Baseline Analyses, including Scope 1, 2, and 3 assessments.
- **Climate Change Resilience Planning**, developing urban and rural adaptation models and mitigation strategies.
- **Supply Chain Sustainability Audits**, evaluating environmental impact across business operations.
- **Net Zero Strategy Development**, integrating low-carbon technology assessments and scenario modeling for optimized energy performance.

DIGITAL & SMART CITIES ADVISORY

DAR AL RIYADH's Digital Advisory services drive technological transformation and innovation, supporting organizations in adopting digital tools to enhance efficiency, intelligence, and data-driven decision-making. Key advisory services include:

- **Advanced Digital Modeling & Visualization**, utilizing CAD, BIM, digital twins, and GIS-based planning.
- **Smart Cities Strategy & Planning**, guiding urban development initiatives with tailored infratech solutions.
- **Innovative Applications & Platform Optimization**, including smart city data platforms, remote sensing and interactive knowledge solutions.
- **Maturity Assessment & Digital Transformation Roadmaps**, ensuring seamless integration of new technologies.
- **Artificial intelligence** and machine learning applications to improve efficiency across the asset lifecycle.

DAR AL RIYADH further reinforces digital excellence through BIM & Digital Transformation services, which focus on:

- **ISO 19650-Compliant Project Information Management**, ensuring structured collaboration through CDE platforms like BIM Collaborate Pro (BIM 360) & Aconex.
- **Integrated BIM Delivery**, incorporating dimensions ranging from 3D design and 4D planning to 7D facility management and digital twin integration.

ASSET MANAGEMENT ADVISORY

DAR AL RIYADH is committed to supporting clients with the entirety of their infrastructure asset or buildings facilities lifecycle. This includes the management of technical efficiency and operation of asset components. Within Asset Management Advisory workstream, the team provides expert guidance on:

- **Asset Integrity Surveys & Maintenance Planning**, assisting organizations in assessing infrastructure conditions and optimizing life-cycle performance.
- **Predictive maintenance solutions** utilizing IoT devices and embedded sensors to accurately predict when maintenance or replacement is required before asset failure occurs.
- **Enterprise Asset Management & Smart AM Solutions**, enabling businesses to integrate green technologies and energy-saving strategies.
- **BIM 6D & 7D Classification**, improving asset tagging and information modeling to support long-term sustainability efforts.

PPP & INFRASTRUCTURE FINANCE ADVISORY

With extensive expertise in the procurement of privately financed infrastructure, DAR AL RIYADH provides strategic advisory services across Government PPP projects, Private Sector Investments, and Lenders Advisory. This team specializes in:

- **Feasibility Studies & Business Case Development**, ensuring structured financial planning for large-scale infrastructure projects.
- **PPP Structuring & Contract Management**, advising clients on stakeholder engagement, specification drafting, and contract negotiations.
- **Bank-ability & Risk Reviews**, supporting private equity firms in assessing mergers, acquisitions, and investment viability.
- **Fund ESG Compliance & Monitoring**, ensuring financial institutions and investors align with global sustainability benchmarks.

A key driver of Saudi Arabia's economic transformation, DAR AL RIYADH plays a pivotal role in the Saudi Arabia **Public-Private Partnership (PPP) program**, contributing expertise in project evaluation and technical advisory. The company actively supports infrastructure growth in sectors such as healthcare, education, transportation, renewable energy, and municipal services.



ENGINEERING AND DESIGN

For over fifty years, DAR AL RIYADH has been a key player in shaping Saudi Arabia's urban and industrial development, delivering innovative, resilient, and sustainable engineering and design solutions. As a trusted advisory and execution partner, we leverage advanced technologies, strategic expertise, and regulatory insight to develop world-class projects, and urban spaces aligned with the Kingdom's evolving priorities

Driven by excellence, we combine innovative design, digital transformation, and sustainability to enhance project efficiency and lasting value. Our multidisciplinary approach ensures seamless execution, fostering innovation, environmental stewardship, and economic growth while shaping a future-ready built environment.

- **Technical Consultancy**
- **Urban Master Planning**
- **Architecture**
- **Civil & Infrastructure**
- **Structure**
- **M.E.P.**

COMPREHENSIVE ENGINEERING & DESIGN SOLUTIONS FOR A FUTURE-READY SAUDI ARABIA

At DAR AL RIYADH, we deliver end-to-end engineering and design expertise, combining innovation, sustainability, and technical excellence across diverse sectors.

Our multidisciplinary approach ensures that every project is strategically planned, structurally optimized, and built for long-term resilience, aligned with the developed state-of-the-art technological practices and delivery methods and environmental stewardship.

OUR CORE ENGINEERING & DESIGN CAPABILITIES

- **Architectural, Urban Design & Building Engineering** – Developing iconic, future-ready structure which redefine the shape of the new national aspirations.
- **Civil Infrastructure** – Developing tomorrow's demand of civil infrastructure by adhering to the state of the art technologies in design and sustainability, with injection of international expertise and world-class bench-marking.
- **MEP Engineering** – Implementing cutting-edge mechanical, electrical, and plumbing systems for optimized performance.
- **Interior & Landscape Design** – Creating immersive environments that blend aesthetics with functionality.
- **Master & Urban Planning** – Shaping resilient communities and smart cities with sustainable growth strategies.

INDUSTRY LEADERSHIP & TRANSFORMATIONAL IMPACT

With a legacy of engineering excellence, DAR AL RIYADH has shaped Saudi Arabia's urban, Industrial and economic landscape through transformational projects, driving strategic development, sustainability, architectural and engineering innovation in alignment with Vision 2030.

NOTABLE HIGH-IMPACT PROJECTS

- **King Abdullah Financial District** – A landmark business hub, setting new standards in architectural and engineering excellence.
- **Large-Scale Master Planning Initiatives** – Driving urban development strategies that accelerate Saudi Arabia's global leadership in infrastructure and innovation.
- **Saudi Sports Stadium** – A world-class sporting facility, designed for high performance and sustainability.

STRATEGIC DIGITAL INNOVATION & TECHNOLOGICAL INTEGRATION

Embracing the digital future, DAR AL RIYADH employs state-of-the-art methodologies, including:

- **Building Information Modeling (BIM)** – Ensuring precision-driven design, sustainable material utilization, and life-cycle assessments.
- **Geographic Information Systems (GIS)** – Integrating data-driven planning for optimized infrastructure and resource allocation.
- **Smart City Solutions** – Leveraging IoT, AI, and automation to build intelligent, connected communities.
- **Project Management Practices** - with latest standards of high agility to ensure adaptability to clients' aspirations.

SUSTAINABILITY & ENVIRONMENTAL STEWARDSHIP IN ENGINEERING

Committed to sustainable development, DAR AL RIYADH embeds low-carbon solutions, green building certifications, and climate-resilient strategies across its engineering and design projects. Our sustainability initiatives include:

- **Carbon-Neutral Design & Renewable Energy Integration** – Supporting global and regional sustainability targets.
- **Circular Economy & Life-cycle Planning** – Driving material efficiency and long-term resource optimization.
- **Urban Green Spaces & Environmental Mitigation** – Enhancing biodiversity and resilience within city landscapes.

UNMATCHED VALUE PROPOSITION: EXPERTISE, COMPLIANCE & EXECUTION EXCELLENCE

As a leading consultant and technical advisory firm, DAR AL RIYADH delivers unparalleled expertise in planning approvals, regulatory compliance, and engineering assessments, ensuring seamless project execution across all phases. Our client-centric approach, combined with deep market knowledge, allows us to create cost-efficient, impact-driven solutions tailored to the specific needs of government entities, private developers, and corporate clients.

CORE VALUES: INTEGRITY, INNOVATION & STRATEGIC GROWTH

At DAR AL RIYADH, we uphold principles that drive engineering excellence and sustainable impact:

- **INTEGRITY** – A commitment to transparency, ethics, and responsible engineering practices.
- **INNOVATION** – Harnessing technology to elevate performance and efficiency across all projects.
- **SUSTAINABILITY** – Designing for environmental resilience, long-term efficiency, and future-ready urban development.

BUILDING TOMORROW'S CITIES & INFRASTRUCTURE TODAY

Through bold vision, technical mastery, and a future-oriented approach, DAR AL RIYADH remains at the forefront of Saudi Arabia's infrastructure transformation, redefining how engineering, design, and sustainability intersect to build thriving communities, dynamic business hubs, and resilient urban ecosystems.



PROJECT MANAGEMENT (PMC)

We provide end-to-end project oversight, managing planning, coordination, contract, commercial, HSEQ, and project controls from initiation to handover. Our expertise ensures cost-efficiency, quality, and seamless execution through best-in-class processes and assurance frameworks.

Leveraging industry-leading methodologies and digital solutions, we enhance project efficiency, mitigate risks, and optimize resource utilization. Our approach integrates stakeholder collaboration, data-driven decision-making, and proactive risk management to ensure projects align with strategic objectives, delivering measurable value and long-term sustainability.

- **Project Management**
- **Design Management**
- **Construction Management**
- **Contract & Commercial Management**
- **Operation & Maintenance**

PROJECT AND PROGRAM MANAGEMENT

Managing large-scale projects presents numerous challenges, from market fluctuations and environmental constraints to complex terrain and subcontractor coordination.

With extensive experience across multiple engineering disciplines, DAR AL RIYADH specializes in mitigating risks and adding value across all aspects of project delivery.

OUR CORE COMPETENCIES INCLUDE:

- Establishing **Project Management Offices** to streamline operations
- Developing **Standards and Procedures** for consistency and efficiency
- Implementing **Project Management Systems** for enhanced oversight
- Providing **Governance & Stakeholder Engagement** strategies
- Applying **Value Engineering** principles to optimize project outcomes

DESIGN MANAGEMENT

At DAR AL RIYADH, we take a proactive approach to design management—working closely with consultants to define clear scopes, establish design criteria, and ensure budget and timeline adherence.

DAR AL RIYADH looks at Design management as a development that encompasses the ongoing processes, business decisions, and strategies that enable innovation and create effectively-designed products, services, communications, environments, and brands, which enhance our quality of life and provide organizational success.

The scope of design management ranges from the tactical management of the design functions and design consultancies, including design operations, staff, methods, and processes—to the strategic advocacy of design across the organization as a key differentiator and driver of organizational success. It includes the use of design thinking—or using design processes to solve general business problems.

DAR AL RIYADH is leading consultancy of design management and design leadership. Our staff members are actively engaged in design thinking and managing industrial design, buildings design, environment design, infrastructure design, transport design, interface design, interior design, architecture, and engineering. They work for government, semi-government, and private sectors.

CONSTRUCTION MANAGEMENT

Construction management is a critical component of any successful project development.

Our team of experienced professionals has a proven track record of delivering high-quality construction management services to ensure your project is completed on time, within budget, and to the highest standards of quality. By engaging with DAR AL RIYADH, you will benefit from a streamlined, end-to-end delivery process with a single point of contact for the entire delivery life-cycle.

This means client won't have to worry about coordinating with multiple contractors or suppliers, as DAR AL RIYADH will handle all aspects of the project on your behalf. In addition, our dedicated construction procurement team is committed to speeding up the project delivery timeline, so you can bring your products or services to market as quickly as possible and working closely with client to identify any bottlenecks or obstacles.

CONTRACT AND COMMERCIAL MANAGEMENT

Procurement plays a critical role in ensuring project success. Our expert team optimizes supplier value through efficient supply chain management, maintaining quality, cost control, and transparency throughout the process.

We integrate procurement with supply chain mapping, tender procedures, and logistics coordination, ensuring seamless delivery and superior project outcomes.

A strong foundation of clear expectations, effective communication, and fair contracts underpins every successful project. We assist clients in contract administration, including bespoke agreements and FIDIC Red, Green, Silver, and Yellow Books, ensuring

accountability and timely fulfillment of deliverables. Our focus on dispute resolution minimizes risks, streamlining project completion without compromising quality or safety.

OUR KEY SERVICES INCLUDE:

- Contract Management & Administration.
- Procurement Optimization.
- Claims Advisory & Dispute Resolution.

OPERATION & MAINTENANCE

Facilities and production environments require reliable operations & maintenance expertise for sustained efficiency and asset preservation. DAR AL RIYADH delivers tailored solutions across commercial, industrial, and government sectors

THREE MAIN ASPECTS ARE OFFERED TO THE MARKET:

- **Facility Management** provision through complete facility support to ensure sustained operations, asset preservation, and customer satisfaction.
- **Production Maintenance** provision of equipment maintenance to ensure factory-asset uptime and reliability and finally.
- **Logistics Optimization** by implementing and controlling the efficient and effective use and storage of goods, along with other aspects of the supply chain, during the life of the services contract.



CONSTRUCTION SUPERVISION

At DAR AL RIYADH, we provide expert construction management and supervision, ensuring efficiency, seamless execution, and compliance with industry standards. Our team oversees projects of all scales, maintaining strict alignment with construction documents, contracts, timelines, and regulations.

By leveraging advanced tracking systems and proactive risk mitigation, we enhance coordination, optimize resources, and ensure quality assurance, safety compliance, and stakeholder alignment—delivering smooth project execution with high performance standards.

- **Construction Management**
- **Construction Supervision**
- **Quantity Surveying**
- **Safety Supervision**
- **Training Academy & Certification**

ENHANCED PROFESSIONAL CONSTRUCTION MONITORING & SUPERVISION SERVICES

At DAR AL RIYADH, we deliver expert-driven construction monitoring and supervision services to ensure seamless execution, operational efficiency, and adherence to industry standards. By integrating best practices, regulatory compliance, and advanced methodologies.

PROFESSIONAL CONSTRUCTION MONITORING

Our structured approach ensures disciplined execution, technical accuracy, and risk mitigation across all various project phases:

- **On-Site Implementation & Execution** Our experienced teams oversee project delivery, enforcing Project Management Institute (PMI) guidelines to maintain disciplined execution and apply industry best practices. By employing real-time monitoring tools, we optimize workflows, ensuring adherence to safety and regulatory standards.
- **Advanced Project Scheduling & Risk Mitigation** We enforce strict timeline adherence, proactively identifying potential technical risks and implementing mitigation strategies. Through predictive analytics and data-driven project management, we prevent costly errors, optimize resource allocation, and enhance operational efficiency.
- **Robust Safety & Regulatory Compliance** By integrating industry-leading safety protocols, occupational health regulations, and environmental standards, we create a risk-free work environment that protects personnel and assets.
- **Strict Adherence to Building Regulations & Quality Standards** We uphold local and international building codes, insurance mandates, and quality benchmarks, guaranteeing project longevity and operational excellence. Our methodologies include third-party audits and continuous assessments to validate compliance.
- **Technical Documentation & Permit Compliance Oversight** By verifying construction phases against technical documentation, permit requirements, and legal obligations, we eliminate regulatory setbacks and minimize approval delays. Our structured approach ensures seamless coordination with governing authorities.
- **Precision in Reporting & Documentation** We provide comprehensive compliance records, detailed progress reports, and final certifications with transparency and accuracy. Our digital documentation systems facilitate seamless record-keeping, ensuring accessibility and data integrity.



COMPREHENSIVE CONSTRUCTION SUPERVISION SERVICES

We offer end-to-end supervision services, ensuring technical accuracy, regulatory compliance, and efficiency across diverse projects. Our expertise extends to:

- **Design Supervision & Validation** Our teams oversee architectural and engineering integrity, ensuring designs meet functional, structural, and regulatory requirements while optimizing project efficiency.
- **Third-Party Verification & Certification** Through impartial quality assessments, we validate compliance with industry standards, ensuring contractor accountability and adherence to contractual obligations.
- **Project & Program Management Consulting** We offer strategic oversight for infrastructure and industrial projects, enhancing operational performance, workflow coordination, and risk management.
- **Site Supervision & Compliance Governance** Our teams ensure daily operational efficiency, regulatory adherence, and risk mitigation, maintaining project momentum through disciplined implementation strategies.
- **Continuous Construction Oversight & Quality Assurance** We monitor construction quality, scheduling, and budget adherence to ensure sustained progress and compliance with contractual obligations.
- **Advanced Commissioning Supervision** We verify system functionality, performance benchmarks, and operational readiness, implementing industry-approved testing methodologies before project handover.
- **Detailed As-Built Documentation & Maintenance Planning** Our documentation teams compile precise as-built records, facilitating future maintenance planning, operational adjustments, and post-project evaluations.
- **Final Testing & Commissioning Validation** We execute rigorous testing procedures to verify construction components, ensuring structural integrity, safety compliance, and operational readiness.

By integrating cutting-edge technologies, expert supervision, and proactive risk management, we ensure unparalleled efficiency, compliance, and excellence in every construction endeavor—contributing to Saudi Arabia's infrastructure advancement.



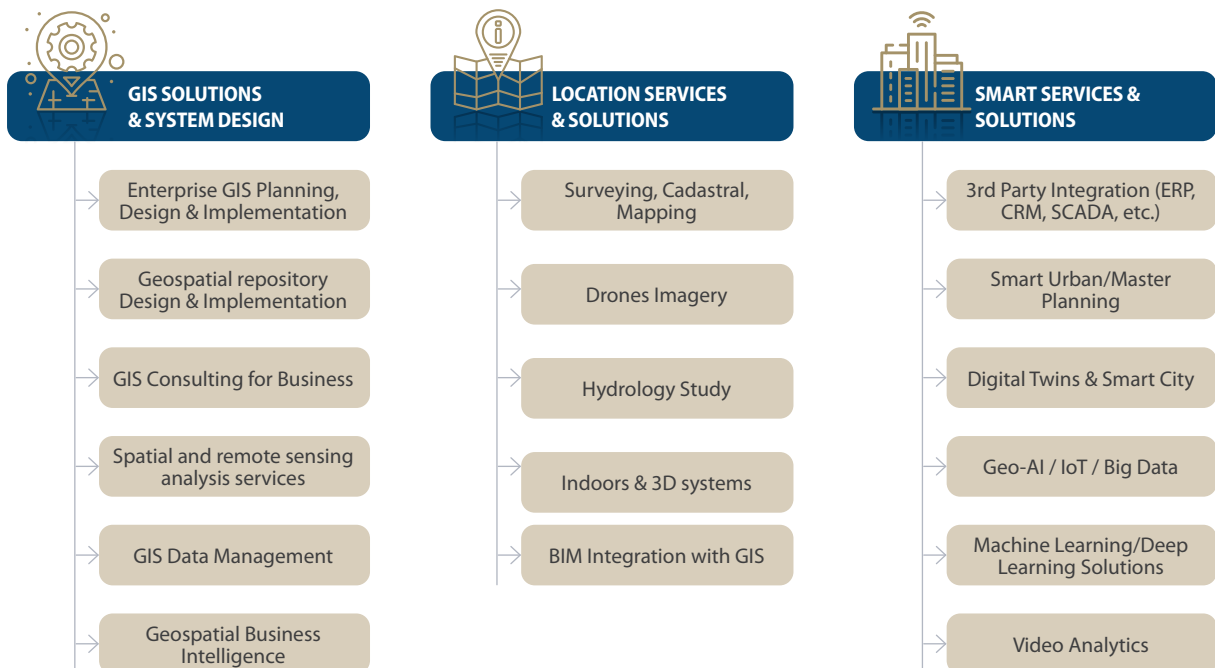
GEOSPATIAL SERVICES

Our key functions include comprehensive project management, advanced engineering solutions, strategic consulting, and innovative problem-solving. We take on the responsibility of delivering high-quality projects, providing expert advice, and ensuring client satisfaction at every stage

In our Geospatial services business line, we develop tailored solutions and products that both meet our client's immediate needs and cater to their long-term objectives.

- **Aerial – Drone Photogrammetry**
- **GIS Services & Applications**
- **Topography & Hydrology Surveying**
- **Digital Twin/ BIM GIS Integration**
- **Mobile Mapping & 3D Modeling**
- **Smart City Assessment & Planning**

GEOSPATIAL SERVICES AND SOLUTIONS



OUR APPROACH

EXPERIENCED TEAM

Our team comprises highly skilled professionals with extensive experience in their respective fields. Their expertise is backed by continuous professional development and training.

CLIENT-CENTRIC APPROACH

We prioritize our clients' needs and work closely with them to understand their requirements, ensuring that our solutions are aligned with their goals

KEY FUNCTIONS AND RESPONSIBILITIES

Our key functions include comprehensive project management, advanced engineering solutions, strategic consulting, and innovative problem-solving. We take on the responsibility of delivering high-quality projects, providing expert advice, and ensuring client satisfaction at every stage.

CORE TEAM MEMBERS AND THEIR ROLES

- **Geospatial Project Managers:** Overseeing project timelines, budgets, and overall execution.
- **Geospatial System Architects:** Responsible for the GIS system design and architecture.
- **Geospatial Geodatabase Administrators:** Responsible of designing the geodatabase schema, conceptual design and geodatabase administration.
- **Geospatial Lead Developers:** Responsible for the design and technical aspects of projects.
- **Geospatial Consultants:** Providing strategic advice and tailored solutions.
- **Geospatial Quality Assurance Specialists:** Ensuring adherence to quality standards.

MAJOR PROJECTS AND INITIATIVES

DAR AL RIYADH develops geospatial solutions for a variety of purposes in a myriad of disciplines. Our approach to managing complex GIS projects involves a process of understanding business needs, ideation and design, and solution development. We design projects to deliver value throughout the project lifecycle so that our client stakeholders can evaluate and participate in defining the solution as it is being developed to ensure it will meet their business needs.

DAR AL RIYADH Geospatial has successfully provided a full range of GIS and other services for prestigious clients:

- Ministry of Municipalities and Housing
- Ministry of Education
- Saudi Food & Drug Authority
- Ministry of Defense
- Ministry of Health
- Royal Commission for Riyadh City
- Riyadh Municipality
- Al Baha Municipality



PROJECT CONTROLS & PROJECT MANAGEMENT

OVERVIEW

At DAR AL RIYADH, we implement project controls strategies, establish standardized reporting frameworks, and cultivate a structured governance environment to ensure operational consistency. As a forward-thinking and value-driven partner, we enable informed decision-making and provide a seamlessly integrated, end-to-end project control service.

By leveraging advanced digital tools, data analytics, and predictive modeling, we enhance risk management, optimize resource allocation, and drive operational efficiency. Our approach fosters transparency and accountability, ensuring projects are delivered on time, within scope, and aligned with strategic objectives, ultimately maximizing value for stakeholders.

OUR APPROACH RECOGNIZES THE KEY TRENDS AND CHALLENGES THAT WE SEE ACROSS THE INDUSTRY, INCLUDING

- **Market change:** the environment has never been more time and cost-conscious; where project teams are expected to achieve ever more for less, and value across a wider range of performance measures. Excellence in time, cost, risk, and scope management are required.
- **Digitization:** technologies present both opportunity, disruption, and complexity for all our clients; having data recorded and stored as a single source of validated truth. Reducing inefficiencies and enabling forward-looking insight, has a direct impact on project and program success and priority-based planning supported by the visibility of deliverables and emerging risks and issues. It is vital to ensure these delivery targets.
- **Pressure on Capacity & Skills:** increasing market cost and time delivery pressures require more productive use of existing resources and the attraction and retention of talent and skills. Delivery organizations recognize that the outsourcing of controls or PMO functions to ensure a sufficient level of capability is assured throughout delivery. Offering better outcomes and cost benefits is increasingly important.
- **Perception & Benefits:** projects that have been set up for success will have highly effective project control functions that consider three core elements; people, process, and systems. Working in harmony, these project control functions can accurately predict, understand and influence the time and cost aspects of projects.
- **Customer Expectations:** very few projects meet all of their objectives and customers have rightly come to expect that every experience will be a good one. Offering clients choice and control and a feeling of being handed with care is paramount.
- **Project Insights & Data:** projects are delivered via effective and informed decision-making. All too often project teams report what has been achieved; however, forward-looking, integrated advice and insightful reports are the key to delivering successful outcomes. This strong correlation between companies placing importance on project controls and projects meeting all or most time, cost, and quality objectives is unsurprising.

OUR END-TO-END SERVICE OFFER INCLUDES

- **Schedule, Cost & Interface Management:** creating actionable plans to align time and cost delivery, reporting, and forward-looking analysis with objectives & priorities.
- **Risk & Opportunity Management:** enabling increased certainty and predictability in successfully achieving project, program, and business objectives.
- **Change Control & Scope Management:** embedding a comprehensive service, delivering a robust change culture, with pace, transparency, and assurance.
- **Benchmarking & Knowledge Transfer:** embedding new capabilities and ways of working in client organizations while transferring skills and knowledge.
- **Performance, Insight & Reporting:** providing access to centralized digitization of a single source of truth reducing inefficiencies, and enabling forward-looking insight.

DAR AL RIYADH'S DIGITAL APPROACH: AI-DRIVEN EFFICIENCY & COST CONTROL

To enhance timely delivery and budget optimization, DAR AL RIYADH integrates AI-powered construction management, revolutionizing planning, scheduling, and resource allocation:

- **AI in Planning & Scheduling** – Ensuring accurate scheduling, optimized resource management, and site risk mitigation for seamless execution.
- **Smart Construction Tracking** – Implementing intelligent scheduling frameworks that align timelines, budgets, and workforce productivity.
- **AI-Powered Resource Utilization** – Enhancing labor, equipment, and material efficiency, addressing industry-wide labor shortages.
- **Simulation-Based Project Forecasting** – Using AI-driven construction simulation to model complex projects virtually before ground is broken, reducing risks and cost overruns.
- **Optimized Productivity & Cost Savings** – Ensuring highest productivity levels, reduced delays, and real-time performance monitoring for operational excellence.

TOOLS THAT DAR AL RIYADH HAS IMPLEMENTED IN PROJECTS

- nPlan
- Nodes and Links
- ALICE
- Early contractor Involvement



NODES & LINKS



ALICE
TECHNOLOGIES

INDUSTRY LEADERSHIP: DEFINING THE FUTURE OF INFRASTRUCTURE & DEVELOPMENT

As an engineering and project management pioneer, DAR AL RIYADH integrates best-in-class processes, groundbreaking methodologies, and cutting-edge innovations, ensuring that projects meet today's needs while anticipating tomorrow's challenges. From smart cities and energy-efficient developments to large-scale infrastructure projects, our technology-driven, sustainability-focused approach positions us as Saudi Arabia's leading project execution partner.

With precision, agility, and future-proof strategies, DAR AL RIYADH continues to lead the industry, delivering high-impact solutions that accelerate economic transformation, infrastructure excellence, and long-term sustainability.

EXCELLENCE & INNOVATION CENTER

EMPOWERING THE FUTURE OF DESIGN AND ENGINEERING AT DAR AL RIYADH

At DAR AL RIYADH, we believe that true excellence stems from a relentless pursuit of innovation, quality, and impact. The Excellence and Innovation Center was established to reflect this belief—a specialized hub where advanced technologies, sustainable engineering, and creative thinking converge to deliver transformative results across the built environment.

Through a forward-thinking approach, the Excellence and Innovation Center fosters collaboration among industry leaders, engineers, and visionaries to pioneer solutions that redefine design and construction standards. By integrating smart technologies, data-driven methodologies, and sustainable practices.

Our center plays a pivotal role in shaping the future of design, engineering, and project delivery, by integrating cutting-edge tools such as Building Information Modeling (BIM), Artificial Intelligence (AI), and Digital Twin technologies into every stage of the project lifecycle. With a strong foundation in multidisciplinary expertise and aligned with DAR AL RIYADH's strategic vision, we are setting new standards for project efficiency, design excellence, and client value.

COMPREHENSIVE ENGINEERING SERVICES OVERVIEW

 Architecture & Building Engineering	 Structural & Civil Engineering	 Roads & Infrastructure Network	 Water & Environmental Systems
 Master Planning & Urban Development	 MEP Systems	 Interior Design & Landscape	 Specialized Facilities

OUR CORE AREAS OF EXPERTISE

1. INTEGRATED ENGINEERING & DESIGN SERVICES WITH BIM EXCELLENCE

We provide end-to-end engineering and design services, driven by top-tier BIM platforms that enhance precision, collaboration, and lifecycle management. From early-stage planning to detailed engineering, our services span all major sectors:

- Architecture and building engineering
- Structural and civil engineering
- Roads and infrastructure networks
- Water and environmental systems
- Master planning and urban development
- MEP (mechanical, electrical, and plumbing) systems
- Interior design and landscaping
- Specialized facilities (educational, industrial, etc.)

Our design processes follow international best practices and sustainability standards, ensuring that every project is resilient, efficient, and future-ready.

2. AI-DRIVEN INNOVATION & DIGITAL ENGINEERING TECHNOLOGIES

Innovation is at the core of our mission. By harnessing the power of AI and digitization, we are redefining what's possible in the engineering and construction landscape. Our technology-driven solutions include:

- AI-Powered Productivity Enhancements: Automated design checks, smart modeling, cost forecasting, and real-time coordination.
- Scan-to-BIM Solutions: Leveraging drones, laser scanners, and AI algorithms to generate intelligent 3D models of existing conditions, enabling faster renovation and retrofit planning.
- Digital Twin Platforms: Creating dynamic virtual replicas of physical assets that enable real-time performance monitoring, predictive maintenance, and asset management.
- IoT & BIM Integration: Connecting physical sensors to virtual models to provide live data streams for better operational decisions and lifecycle planning.

We are actively investing in the next generation of engineering tools, ensuring our clients benefit from measurable efficiency gains, reduced risks, and enhanced decision-making.

3. CONTRACTUAL SERVICES & COST ENGINEERING

In today's competitive market, accurate cost control and contractual clarity are crucial to project success. Our team of specialists offers full-spectrum services designed to safeguard project investments and ensure commercial viability:

- Estimation and budget preparation
- Cost control and value engineering
- Contractual and engineering claims
- Time impact and variation analysis
- Risk management and procurement strategy
- BOQ development and compliance checks



All services are performed in strict alignment with DAR AL RIYADH's compass of professionalism, ethics, and transparency. We ensure that our clients receive not only technically sound solutions but also trusted commercial advice that minimizes exposure and maximizes project outcomes.

E&I SUSTAINABLE INNOVATION

The Excellence and Innovation Center is more than a service center; it is a center for transformation. We serve contractors, developers, government entities, and private sector clients across Saudi Arabia and the wider region, helping them navigate complex challenges with confidence. Our commitment to sustainable design, digital excellence, and value creation ensures that every project we touch contributes positively to communities and future generations.

As industry evolves, we remain at the forefront—connecting engineering with intelligence and transforming vision into reality.

EXCELLENCE AND INNOVATION STEPS



WHO WE WORK FOR

GOVERNMENT & SEMI-GOVERNMENT

During the last two decades, Saudi Arabian government sector expenditures have increased dramatically due to massive spending on development and infrastructure projects. Its investment portfolio is focused mainly on social, transport, and industrial infrastructure.

Since the inception of DAR AL RIYADH in 1975, we have worked for most organizations in these segments, such as the Ministry of Municipal, Rural Affairs and Housing, Ministry of Defense, Saudi Arabian National Guard, Ministry of Justice, and RIYADH Municipality, etc.

The semi-governmental sector has been the backbone of Saudi Arabia's economic engine. DAR AL RIYADH has served the government and semi-government sectors for almost 50 years by providing services ranging from engineering to construction management, geographical information systems, and industrial systems and solutions.

PUBLIC INVESTMENT FUND CLIENTS

Saudi Arabia is undergoing rapid economic and social transformation, guided by Vision 2030.

DAR AL RIYADH continues to grow and actively contributes to the country's success by supporting the many infrastructural.

Investment programs of the Public Investment Fund Entities, such as NEOM, Roshn, Red Sea Global, and KAFD.

PRIVATE SECTOR CLIENTS

The Saudi Arabian government is encouraging the growth of the private sector to diversify its economy and employ more Saudi nationals.

DAR AL RIYADH has served the private sector by providing engineering, construction management services, professional staffing, and industrial systems & solutions.

Private sector clients include Saudi Aramco, SABIC, Al Raidah Investment Company, Saudi Arabian Mining Company, and Jabal Omar Development Company.



PARTNERSHIP WITH DAR AL RIYADH

PARTNERING WITH DAR AL RIYADH

Given our involvement in the success of several projects in the Kingdom, many opportunities are inherent in several areas to enhance the value provided to the Ministry. Among the main opportunities to strengthen the value of this partnership are:

- A 100% Saudi company that has supported the Kingdom's infrastructure for more than 50 years by implementing the best Saudization, training, and development programs in the Kingdom.
- We are an award-winning multidisciplinary service provider covering the project life cycle from concept, engineering, and design to construction supervision, operation and maintenance, and project management. Since our inception in 1975, we have grown our roots in the Kingdom of Saudi Arabia and pride ourselves on supporting its development over the past decades. We provide complete project life cycle services from master planning, concept design, and engineering to construction management, supervision, and project management consulting.
- Our teams actively participate in projects that support Vision 2030, and our values align with the Kingdom's growth and development goals.
- We are proud to be recognized as an employer of choice with the highest integrity, reliability, health, safety, and environmental standards. We are one of the few Saudi companies with the ISO 45001 certificate for occupational health and safety. We talk about our employees so that they can focus on and pay attention to our projects. Our good reputation in the market allows us to retain and attract the best talent and resources for employment in any project.
- A robust internal system of processes and tools to create efficiency and clarity for all tasks and activities by designers and contractors.
- Our long history allows us to understand all local regulations, standards, and requirements, which prevent mishaps and rework for our customers.
- Through our mix of Saudi and international staff, we provide practical expertise and solutions that work in Saudi Arabia: design and build, international design standards, modular construction, and prefabrication.

PARTNERING FOR EXCELLENCE

DAR AL RIYADH has successful joint ventures in Saudi Arabia, some of which have been active in the Kingdom for over 20 years

DAR AL RIYADH consultancy and the above Saudi Arabia joint venture partners employ over 6000 people across Saudi Arabia working for the Saudi Arabia Government, corporate clients, and many of the Saudi Giga and Mega-projects.

We are utilizing Saudi Arabia & international sector specialists from this large resource base to provide our clients the full range of Advisory services.



17

OPERATING LOCATIONS,

- 5 PERMANENT OFFICE
- 12 KINGDOM-WIDE OPERATING OFFICES

OFFICIAL LEGAL INFORMATION

DAR AL RIYADH FOR ENGINEERING CONSULTANCY COMPANY

50 YEARS OF EXCELLENCE

BUSINESS FIELDS

- Advisory Services
- Construction project management
- Design Services
- Engineering activities for electrical projects, excavations, security, and safety.
- Engineering and architectural consulting activities
- Engineering consultations for roads, bridges, and tunnels
- Engineering consulting for environmental architecture
- Engineering consulting for seaports, maritime transport, and chemical construction
- Engineering consulting for urban planning
- Geological consulting activities
- Marine consulting activities
- Mechanical Engineering Consulting
- Railway engineering consultancy
- Water and sanitation engineering consulting

HQ ADDRESS

Building No. 8616, Salah Al Din Al Ayoubi Road
Al Dhubbat District P.O. Box 12623, RIYADH,

Kingdom of Saudi Arabia.
RIYADH, Kingdom of Saudi Arabia

CONTACT DETAILS

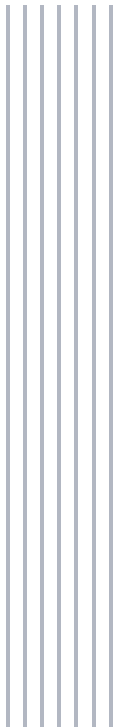
Phone: +966 (011) 277 5911
Fax: +966 (011) 206 0099

info@daralriyadh.com
www.daralriyadh.com



COMBINING LOCAL KNOWLEDGE WITH WORLD CLASS SKILLS

PROJECT
EXPERIENCE





KING ABDULLAH FINANCIAL DISTRICT (KAFD)

Riyadh, Saudi Arabia



Raidah Investment Company



Construction Management Supervision and Design Review

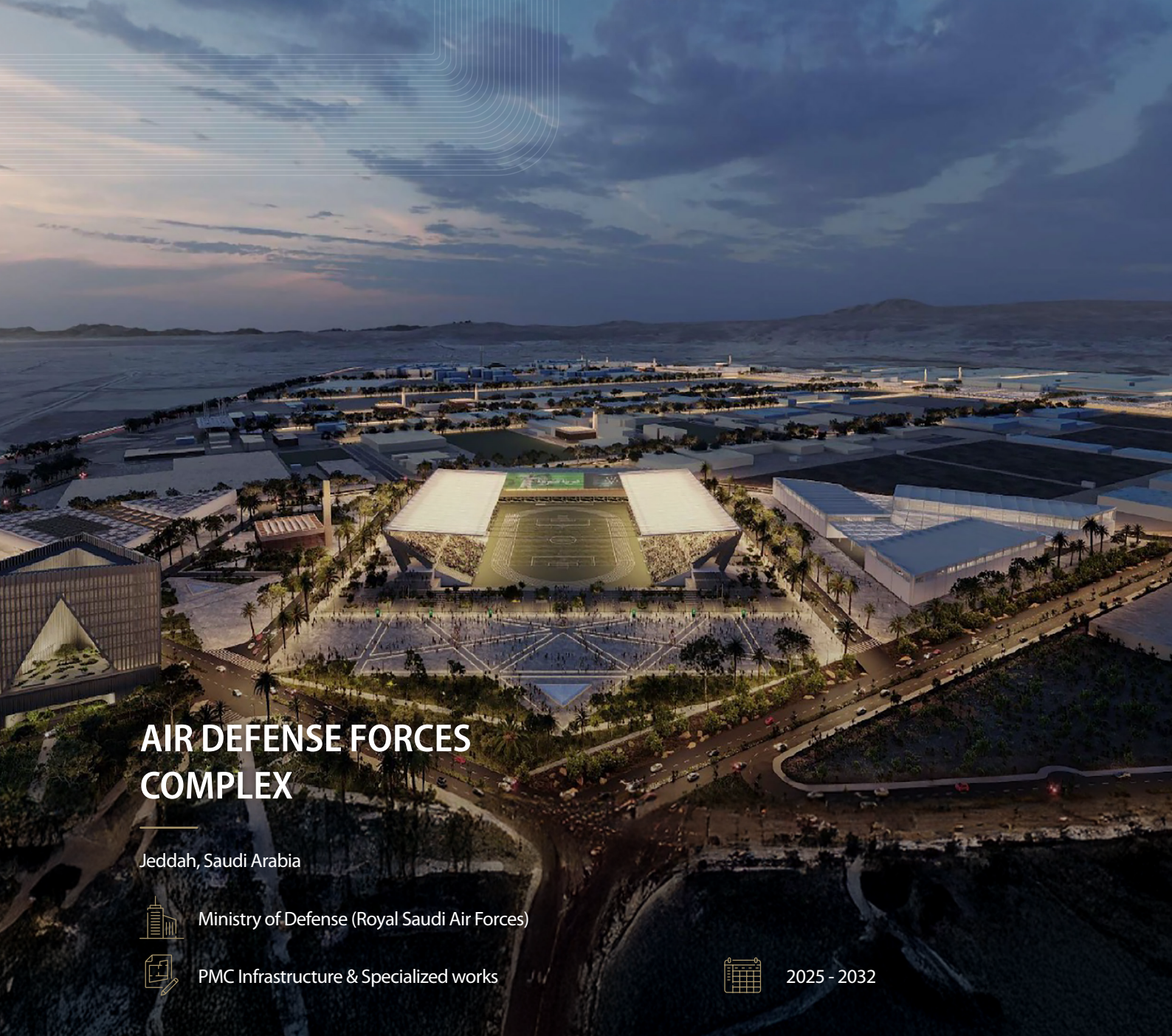


2009 - 2025



KAFD, Saudi Arabia's premier financial center, was designed by over 25 world-renowned architects and features five key asset types: offices, retail and F&B, residential, hotels, and entertainment. DAR AL RIYADH serves as the Construction Management Consultant for 55 towers, overseeing Resident Engineer services, post-contract cost management, and contract administration. The team supervised all construction phases, from execution to handover and defects liability, ensuring seamless delivery.

KAFD holds the distinction of being the world's only LEED Platinum-certified Neighborhood Development, recognized by the U.S. Green Building Council (USGBC), with its sustainability footprint spanning over 15 certifications across platinum, gold, and silver statuses. In addition to construction management, DAR AL RIYADH provides design review services for the development's fit-out elements.



AIR DEFENSE FORCES COMPLEX

Jeddah, Saudi Arabia



Ministry of Defense (Royal Saudi Air Forces)



PMC Infrastructure & Specialized works



2025 - 2032



The Royal Saudi Air Defense Forces (RSADF) are relocating their Jeddah base to a new site outside the city, improving security, efficiency, and future expansion. The project includes four operational bases:

- Air Defense Institute, Centre & School for training and research.
- Maintenance Facility for equipment servicing.
- Supply & Logistics Base for resource management.
- Sports City to support personnel well-being.

Delivered under a Design & Build format, the relocation enhances infrastructure, streamlines operations, and aligns with RSADF's long-term defense strategy.



KING FAISAL AIR ACADEMY (KFAA)

Al Majma'ah, Saudi Arabia



Ministry of Defense Royal Saudi Air Forces (MOD)



PMC, Design and Construction Management



2019 - 2024



DAR AL RIYADH was appointed to oversee project management, design management, and site supervision for the relocation of the King Faisal Air Academy from RIYADH to Al Majma'ah Governorate, 200 kilometers north, covering a site of 314 km². The scope includes all civil, structural, architectural, mechanical, and electrical works, along with security infrastructure, roads, service facilities, technical facilities, and residential units.

Additionally, DAR AL RIYADH engaged aviation and technical specialists in areas such as airplane refueling, navigation systems, aviation simulators, and environmental studies. As PMC, it manages project planning, financial monitoring, quality standards, risk, and closeout processes.



KING SAUD AIR BASE

Hafr Al Batin, Saudi Arabia



Ministry of Defense (Royal Saudi Air Forces)



PM/CM Infrastructure & Specialized works



2025 - 2029



DAR AL RIYADH Scope of work is providing the project Management and Supervision Services for Design and Built the Facilities of King Saud Air Base (Saudi ArabiaB), By securing the all necessary qualified, experienced and efficient teams to implement the work as required,

- Package 1 : Main Infrastructure (Roads, Potable Water, STP, Firefighting, Power Supply, Telecom, Str. Lighting, Security Fence).
- Package 2 : Specialized works

Operational Infrastructure (Parallel Run and Tax Ways, UAV Run and Tax Ways, Aircraft Sunshad, Navigation System, ATC Tower).

Technical Facilities (Aircraft Maintenance Hanger, Work Shops, Warehouses, Aircraft refueling facilities).

Residential Area (Commanders Villas, Officers Housing, Sub Officers Housing



NEOM OUTER REGION

Neom, Saudi Arabia



NEOM



Project Management Consultant (PMC)



2023 - 2034



نيوم NEOM

DAR AL RIYADH has been appointed by NEOM to provide whole Project Management Consultancy Services, including all areas & aspects of project management & construction supervision.

The NEOM Outer Regions Project covers a wide & diversified portfolio, interfacing with various NEOM Sectors such as food, media, operations, sports, health & wellbeing. Furthermore, the project includes the management of the FM arm of NEOM's assets.

DAR AL RIYADH is managing the development of the following types of assets within Outer Regions:

1. Infrastructure: water, power, communications & mobility networks
2. Tourism – ranging from Midscale (nominally 3*) Hotels to Hyper Luxury) Hotels
3. Commercial: office complexes, retail, food & beverage, truck center
4. Community Facilities: police, fire station, medical & school facilities
5. Logistics Infrastructure: camps, construction facilities & offices



OXAGON VILLAGE PUBLIC SAFETY ASSETS

NEOM EMERGENCY RESPONSE CENTER
Neom, Saudi Arabia

NEOM

Design Services

2023 - 2024



Oxagon, NEOM's industrial city, will be one of the world's largest ports and logistic hubs. As part of Oxagon's residential community, DAR AL RIYADH is developing the design up to tender stages for the Central Public Safety Response Station (fire & police station) and the Southern Public Safety Response Station (fire station).

The two stations together cover the required firefighting and policing requirements in OXAGON Village. Due to the nature of the phasing of the development, the Central station will be operation in the first phase of the island's go-live and provides the essential public emergency response functionalities. As the village grows, the Southern station will expand the island's public safety response capacity, whilst introducing additional functionalities.



SAUDI ARABIA RAILWAYS PROGRAM

Dammam, Al-Hassa and Riyadh, Saudi Arabia



Saudi Arabia Railways



PMC, Technical Support and Construction Management



2018 - 2025



Saudi Arabia Railways is the owner and operator of the Kingdom's railway network. DAR AL RIYADH was appointed as a project management consultant, providing technical support and supervision services to ensure the completion of railways, infrastructure, and safety work as well as supplementary works and modifications for construction in multiple locations.

DAR AL RIYADH's relationship with the client spans several years, over which the company has participated in several projects from early infrastructure to train stations, warehouses and administrative buildings. Depending on the tasks, the company has provided resources on site, at the client's offices and from our headquarters in RIYADH.



NATIONAL HOUSING COMPANY PROGRAMS

Throughout Saudi Arabia



National Housing Company



Supervision, Design, and PMC Services



2012 - 2025



Since 2012, DAR AL RIYADH has been a trusted partner of the National Housing Company, delivering comprehensive engineering and management solutions for transformative housing projects across Saudi Arabia. With an impressive portfolio spanning over 50,000 residential units, alongside essential infrastructure such as mosques, schools, roads, and public services, we are shaping communities that enhance quality of life and drive national development.

Our expertise extends beyond design and supervision—our dedicated on-site teams ensure seamless project execution, offering strategic planning, financial control, risk management, and quality assurance to safeguard long-term success. Through precision, innovation, and unwavering commitment, we empower sustainable urban growth while reinforcing our leadership in the Kingdom's housing sector



JABAL OMAR DEVELOPMENT

Makkah al-Mukarramah, Saudi Arabia



Jabal Omar Development Company



Construction Management and Supervision



2012 - 2025



This prestigious mixed-use destination in the center of Makkah-Al Mukarramah is comprised of a podium and 4 towers. The podium will contain commercial areas, car park, hotel lobbies and back of house. The four hotel towers are intended to be a 5-star hotel run by well-known international hotel operator - Jumeirah, and consists of permanent and seasonal residential apartments, hotels, commercial areas, convention facilities, public parking and associated support facilities such as public assembly and prayer areas.

The project is testament of Jabal Omar Development Company's commitment to sustainable growth and to the preservation of Saudi Arabia's cultural heritage.

DAR AL RIYADH provided Construction Supervision Consultancy Services for the project, which has a land area of 11,375 m² and built-up floor area of approximately 198,451 m² distributed in podium, 4 towers of 24 floors each, 96 apartments, and a 1033-key hotel.



GOSI HOUSING COMPOUND AT AL RIMAL DISTRICT

Riyadh, Saudi Arabia



General Organization Social Insurance



Design Services and Construction Management




2013 - 2021

gosi 
التأمينات الاجتماعية
Social Insurance

DAR AL RIYADH was involved in the development of Andorra Village Compound from master planning, through full design, construction and handover. The project, located at Al Rimal District in RIYADH, was built over 670,000 m² and includes 1250 residential units built as apartments, villas, townhouses and duplexes.

Other areas include retail, sports facilities, extensive landscape and resort style facilities.

DAR AL RIYADH's design team implemented their expertise in the development of structural, mechanical, electrical and site-wide infrastructure assets, including civil works and utilities for public realm and landscaping.



MASTER PLANNING AND INFRASTRUCTURE DESIGN OF RAS AL KHAIR INDUSTRIAL CITY

Ras Al Khair, Saudi Arabia



Royal Commission for Jubail and Yanbu



Master Planning, Studies, Detailed Engineering Design for
Buildings and Infrastructure



2011 – Ongoing



الهيئة الملكية
للجبل وينبع
Royal Commission for Jubail & Yanbu

DAR AL RIYADH provide comprehensive Engineering Masterplan and architectural design services, covering both primary and secondary infrastructure to support large-scale urban and industrial development. Our expertise ensures well-integrated, sustainable, and strategically planned environments, fostering economic growth and operational efficiency.

In collaboration with renowned consultants, we have contributed to front-end engineering and feasibility studies for Jubail and Ras Al Khair Industrial Cities. These studies play a critical role in assessing project viability, optimizing resource allocation, and laying the foundation for robust infrastructure. Our work supports key sectors, including transportation, utilities, industrial facilities, residential and commercial developments, ensuring a cohesive and forward-thinking approach to city planning

GENERAL ENGINEERING SERVICES FOR JAZAN CITY FOR PRIMARY AND DOWNSTREAM INDUSTRIES (JCPDI)

Jazan, Saudi Arabia



Royal Commission for Jazan City



Detailed Engineering Design for Buildings and Infrastructure



2023 - 2028



الهيئة الملكية
للجـبـيل وبنبع
Royal Commission for Jubail & Yanbu

General Engineering Services – Phase 3 & 4

Each phase supports comprehensive urban and industrial development with a focus on infrastructure, security, and sustainability. The scope includes:

- **Master Planning & Studies** for strategic long-term growth.
- **Infrastructure Design**, covering ports, railways, utilities, roads, and bridges for seamless connectivity.
- **Pump Stations & Treatment Plants** to ensure effective water management.
- **33kv Sub-Stations** for reliable power distribution.
- **Community Developments**, including residential, commercial, and institutional projects.
- **Earthworks & Site Development** for structural stability.
- **Industrial Security** with advanced safety measures.
- **Storm Drainage Design** for flood mitigation.



INDUSTRIAL SECURITY FORCES FACILITY

Ras Al Khair Industrial City, Saudi Arabia



Royal Commission for Jubail and Yanbu



Engineering & Architecture



2011-2013



الهيئة الملكية
للجـبـيل وبنبع
Royal Commission for Jubail & Yanbu

The RC Industrial Security Forces Facility spans 55,000 sqm, designed to support operational efficiency and security management. The three-story building (Basement + Ground + First Floor) houses key functional areas, including:

- **Administrative Offices** for security operations and management.
- **Warehouse Facilities** for equipment and logistical storage.
- **Permit Offices** to streamline regulatory processes.
- **Vehicle Violation Lockup Yard** for secure vehicle impoundments.
- **200 Shaded Parking Spaces** to accommodate staff and visitors.



JUBAIL CONVENTION CENTER

Jubail, Saudi Arabia



Royal Commission Of Jubail & Yanbu Plus SABIC



Conceptual, Detailed Engineering & Architectural Design



2018-2023



الهيئة الملكية
للجـبـيل وبنـبـع
Royal Commission for Jubail & Yanbu

DAR AL RIYADH has been appointed as the Lead Designer of Record for the Jubail Convention Center, overseeing all phases from concept design to tender documentation completion, along with Construction Supervision Services through commissioning and handover.

- Spanning 37,200 sqm across five levels, the center will feature:
- An exhibition hall for conferences and events.
- Modern office spaces for operations.
- A 900-seat auditorium for presentations and performances.
- Dining options with restaurants for visitors.
- Direct access to an adjacent shopping mall.
- Ample parking to support traffic flow.

PMO SERVICES FOR SAUDI IRRIGATION ORGANIZATION

AL Ahsa, Saudi Arabia



Saudi Irrigation Organization (SIO)



Project Management Consultancy (PMC)



2024 – 2027



المؤسسة العامة للري
Saudi Irrigation Organization
المملكة العربية السعودية

- The Saudi Irrigation Organization commissioned DAR AL RIYADH with the task of establishing & operating an Institutional Project Management Office in order to develop, improve & support the organization's projects & operational processes.
- The team appointed consists of qualified personnel who support & develop operational tasks, create & activate tools & models, & transfer knowledge to SIO's management & other employees. The areas of support include the following departments:
 - Strategic Studies, Engineering, Contracts, Project Control, Excellence, Construction
 - Starting by analyzing operational gaps, the team will develop a transitional plan along with the client & finalize with the implementation & operation of the PMO.



MODON INDUSTRIAL CITIES

Dammam, Jeddah, and Sudair, Saudi Arabia



Saudi Industrial Property Authority (MODON)



PMC and Construction Management



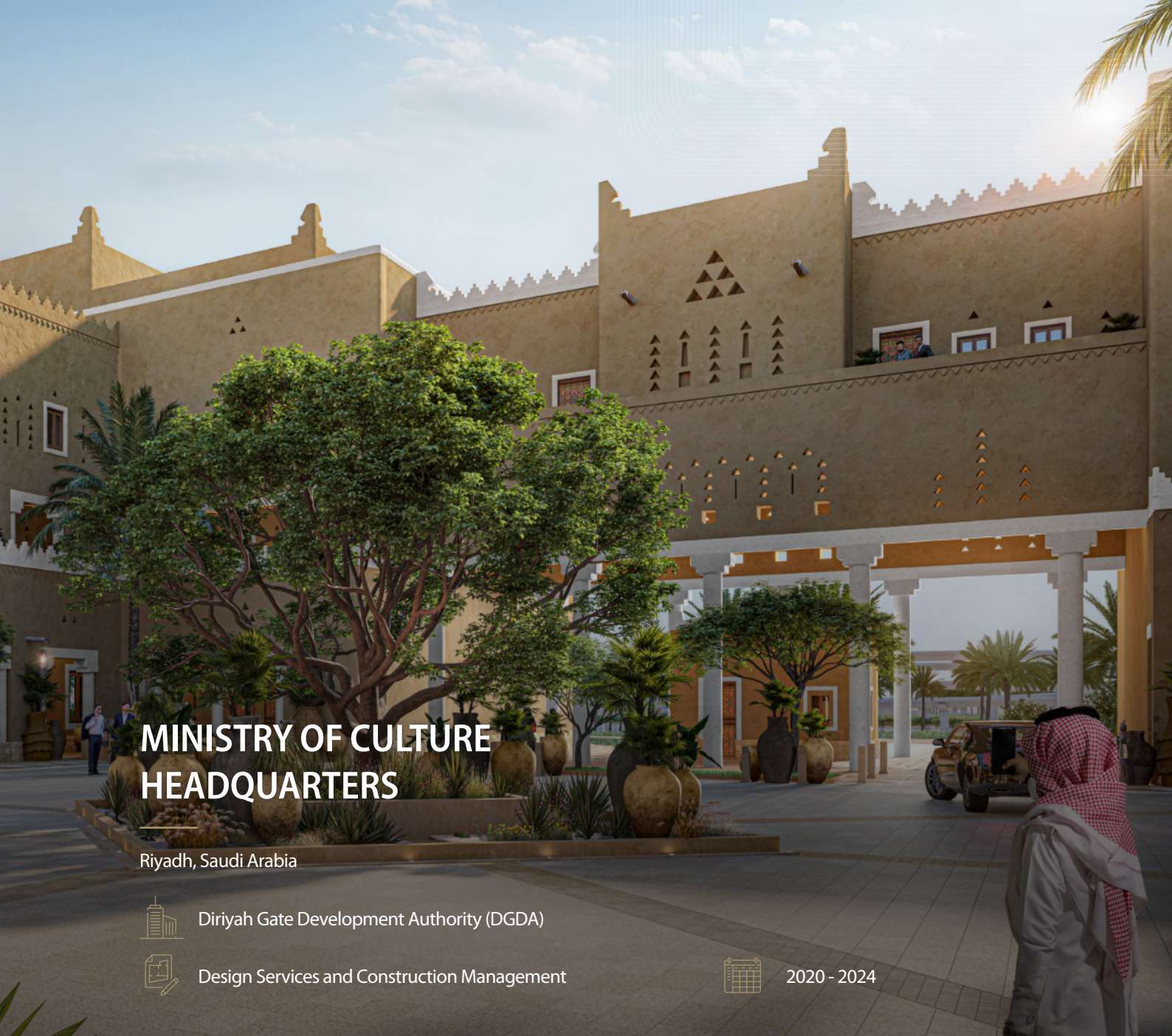
2012 - 2024



MODON is responsible for the establishment, development and operation of industrial estates and technology zones in partnership with the private sector, and to provide integrated services to meet investors' requirements.

DAR AL RIYADH has provided PMC services for MODON since 2012, covering design management for wet utilities (water, wastewater, irrigation and storm drainage system), dry utilities (high, medium, low tension electrical assets and telecommunication), mechanical engineering, architecture, master planning and landscape, roads and infrastructure engineering, structural engineering, BIM and QC/QA.

The team has ensured that the projects satisfy the spatial and functional needs of the users, are designed specifically for the actual land use parameter, are designed for the minimum capital cost consistent with lowest life cycle costs, and meet all applicable codes and regulations.



MINISTRY OF CULTURE HEADQUARTERS

Riyadh, Saudi Arabia



Diriyah Gate Development Authority (DGDA)



Design Services and Construction Management



2020 - 2024



DAR AL RIYADH provided multi-disciplinary design services for the Saudi Ministry of Culture’s new headquarters, a high-end office and community facility built for collaboration, efficiency, and innovation. Established in 2018, the Ministry plays a key role in Saudi Vision 2030, promoting culture as a way of life.


The headquarters will house commissions across film, heritage, libraries, music, theater, fashion, culinary arts, museums, architecture, and visual arts. Designed in the Najdi architectural style, it integrates seamlessly into Diriyah Gate Development with pedestrian-friendly access and F&B destinations. Positioned near Diriyah Square, the site will achieve LEED Platinum certification.


Covering 79,000 m² across multiple levels, DAR AL RIYADH has been involved from concept design through tender documentation and continues providing construction phase services until project completion



DIGITAL CITY (FORMERLY KNOWN AS ITCC)

Riyadh, Saudi Arabia

 Ossol (Formerly owned by Raidah Investment Company)

 Construction Supervision

 2009 - 2021



Located in the heart of RIYADH, Digital City is Saudi Arabia's first mixed-use development with commercial, residential, and retail offerings. It is a multi-purpose community with an innovative office park featuring contemporary high-rise buildings of cutting-edge architecture and sustainable design.

The development is designed to stimulate and nurture a knowledge-based economy by cultivating an innovative business environment and a dynamic workplace.


DAR AL RIYADH was tasked with the Construction Management of eleven buildings within the development. The scope included post contract cost management and contract administration (cost control, value engineering, procurement, strategic advice and dispute resolution services).

The project includes luxury hotels, leisure facilities, a convention center, residential apartments, mosque, a technical college, government service buildings and a district cooling plant with a total cooling capacity of 35,000 TR.




MISK CITY

Riyadh, Saudi Arabia

 MiSk City Company

 PMC, Design Management and Construction Supervision

 2023 - 2025



MiSk City is a multi-phased city development which will create a new district for RIYADH and will serve as an incubation neighborhood for young Saudis to embrace the central themes of the Kingdom's Vision 2030.

DAR AL RIYADH has been tasked with the project, design and construction management services for several projects and construction works packages within the district, covering all design stages, permits and approvals, procurement, construction, fit out and handover, all with coordinated management of the overall program and achieving key milestones as established by Misk City Company.

DAR AL RIYADH is responsible for site-wide infrastructure and assets, including civil works and utilities for public realm and landscaping, fire station, warehouses, FM buildings, solid waste transfer stations, a gas farm and a wastewater treatment plant.



KNOWLEDGE ECONOMIC CITY HUB

Al-Madinah al-Munawwarah, Saudi Arabia



Knowledge Economic City (KEC)



Construction Supervision



2023 – 2025



The largest integrated center in Madinah, this development features a commercial complex, Hilton hotel, luxury residential tower, entertainment venues, sports health club, and a boulevard lined with restaurants and cafes. It also includes pedestrian squares and a public park, creating a vibrant urban environment that blends hiking, shopping, housing, and leisure.

Designed with modern urban planning principles, the project spans a 180,000 m² shopping mall, a 19-floor, 350-room hotel (48,000 m² BUA), and a 19-floor, 110-key residential tower (31,000 m² BUA). It also houses an interactive museum, entertainment hall, and cinema, alongside a 45,000 m² public park



THE RED SEA COASTAL VILLAGE

Red Sea, Saudi Arabia



Red Sea Global



Construction Management



2021 - 2024



The Coastal Village provides living, visiting, working, and recreational facilities for the senior management staff under Red Sea Global as well as its consultants, contractors, and other vendors participating in The Red Sea Project. It incorporates the latest concepts in co-working and community living spaces, enabling the residents, visitors and their family members to interact and collaborate in a variety of comfortable public spaces for both work and recreation.

DAR AL RIYADH provided construction management services for the construction of 40 accommodation buildings, cafeterias and service areas. The team supervised the execution of all civil, structural, architectural, mechanical and electrical works, as well as all associated public utilities networks that enable the operation of the facility.



QIDDIYA COAST

Jeddah, Saudi Arabia



Qiddiya Investment Company



Construction Management and Design Review



2023 - 2026



Qiddiya coast, with a site area of 13.5 km² and over 18 km of coast overlooking pristine waters, will be Qiddiya’s entertainment area along the Red Sea coast. The project will include public leisure areas, hospitality, residential, retail and social infrastructure such as schools, mosques and clinics.

DAR AL RIYADH’s scope of work covers the Early Works package for 10.7 km² of the site, bringing it up to formation level ahead of the infrastructure and buildings work packages. The package covers site set up, lighting, contractor site accommodation, site offices for the employer’s and consultants’ use, general site clearance & vegetation removal and disposal, demolition and disposal of existing structures, ground testing, trial pits, dewatering, excavation, filling, material testing, ground improvement, site fencing, security gate and construction access road.



ROSHN COMMUNITIES

Throughout Saudi Arabia



ROSHN



Design Services



2022 - Ongoing



Sharing the common goal of transforming the way people live, work and play in Saudi Arabia, DAR AL RIYADH has provided design services for several of ROSHN's projects across the Kingdom. The projects are large townships with community facilities where the design team has implemented their expertise in the development of structural, mechanical, electrical and infrastructure design. The involvement of DAR AL RIYADH has spanned from concept design to IFC documentation.

Moreover, DAR AL RIYADH supports ROSHN in obtaining approvals from authorities, title deeds for plots and residential units, land surveying and site boundary demarcation. Assets include single family units inclusive of all services, secondary infrastructure and landscaping.



PRINCE NAYEF MEDICAL CITY

Riyadh, Saudi Arabia



Ministry of Interior



Construction Management and Supervision



2012 - 2013



Prince Naif Medical City is a significant healthcare development in Saudi Arabia, designed to enhance medical services and infrastructure. The project, undertaken by DAR AL RIYADH, involves the construction and management of a 1,552-bed specialized medical city, developed in four phases.

Key Features:

- Comprehensive Medical Facilities: The city is designed to accommodate a wide range of medical specialties, ensuring advanced healthcare services.
- Phased Development: The project is structured into four phases, allowing for systematic expansion and integration of medical services.
- Construction Management & Supervision: DAR AL RIYADH provided expertise in overseeing the construction process, ensuring quality and efficiency.
- Strategic Location: Situated in RIYADH, the medical city aims to serve a broad population with state-of-the-art healthcare solutions.



SECURITY FORCES HOSPITAL

Riyadh, Saudi Arabia



Ministry of Interior



Engineering and Design



2008 - 2009



The Security Forces Hospital Expansion and Parking Project in RIYADH aims to improve accessibility and hospital efficiency. Key enhancements include:

- Helipad above the hospital annex for rapid emergency air transport.
- Bridge between the hospital and emergency room for seamless patient transfer.
- Bridge linking the southern parking lot to the dialysis center to enhance accessibility.
- Conversion of a two-car parking structure to a prefabricated system for optimized space and durability.

These upgrades enhance emergency response, patient mobility, and hospital logistics, supporting smoother operations and better care delivery.



KING FAISAL SPECIALIST HOSPITAL

Riyadh, Saudi Arabia



King Faisal Specialist Hospital (KFSH)



Project Management Consulting (PMC), Design and Construction Mgmt.



2019 - 2024



مستشفى الملك فيصل التخصصي ومركز الأبحاث
King Faisal Specialist Hospital & Research Centre

DAR AL RIYADH has been appointed to provide project management consultancy, design management, and site supervision services for the relocation of the King Faisal Air Academy. The facilities, originally built in downtown RIYADH, will be relocated to Al Majma'ah Governorate, 200 kilometers north of the capital, on a site with a total area of 314 square kilometers.

The scope covers the implementation of all civil, structural, architectural, mechanical, and electrical works. Other assets include security fences and gates, infrastructure and roads, operational infrastructure, and service facilities such as operations and maintenance, intelligence, and air police, technical facilities for students, and residential units for families and bachelors.

In addition, DAR AL RIYADH has engaged specialists in aviation services and technical studies such as aircraft refueling, navigation and control systems, flight simulation, and environmental and renewable energy studies.



GENERAL AUDITING BUREAU

Riyadh, Saudi Arabia



GENERAL AUDITING BUREAU



Master Planning and Engineering Detail Design



1999 – 2001



The General Auditing Bureau Headquarters comprises two major buildings. A north tower which comprises the various auditing offices, and a lower building which has an auditorium, restaurant and prayer hall.

Both buildings have three basements to provide car parking space and for electro-mechanical services.

We positioned the building to carefully control heat gain but maximize the use of natural daylight by orienting the principal glazed facade of the tower towards the north.



DAMAC TWIN TOWERS

Riyadh, Saudi Arabia



Ministry of Transport and logistic services



Design and Supervision Services



2012 - 2013



Design and Supervision Services – DAMAC Twin Towers, Riyadh

Strategically positioned in the heart of Riyadh’s Central Business District, the DAMAC Twin Towers stand as a prominent landmark directly opposite the Kingdom Tower. Each of the 27-story towers houses over 300 five-star serviced and residential apartments, boasting world-class branded interiors that redefine luxury living.

DAR AL RIYADH’s multi-disciplinary team has spearheaded the project, delivering comprehensive architectural and engineering design, securing full municipal approvals, and overseeing construction supervision to ensure exceptional quality and compliance.

Leveraging our fully integrated Building Information Modeling (BIM) parametric system, we documented the project with a ‘clash-free’ methodology, achieving remarkable efficiency and precision within record time.

COMPLETION OF SOME ROADS

Al-Qassim Region, Saudi Arabia



Ministry of Transport and logistic services



Construction Supervision



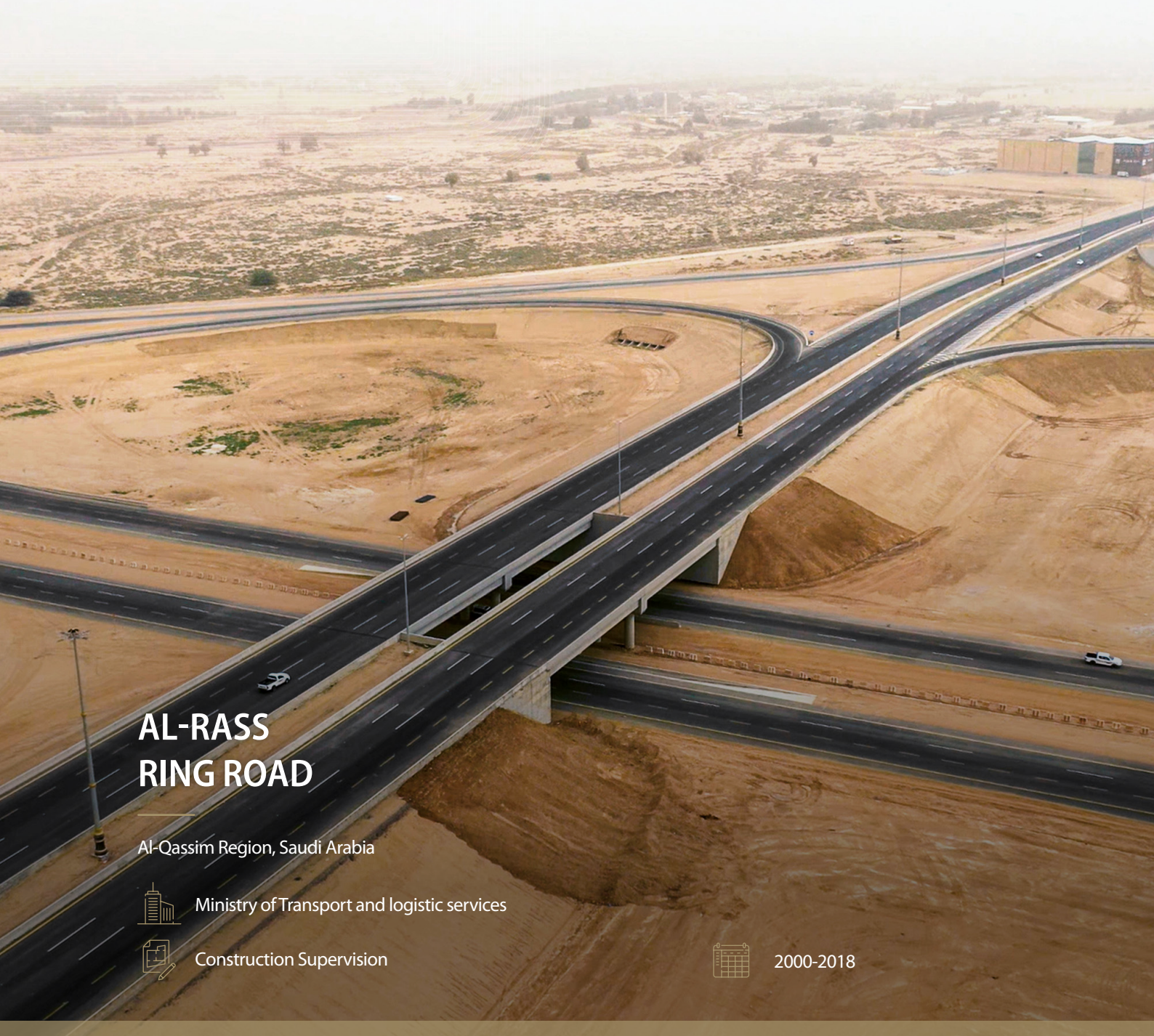
2019 – 2022



وزارة النقل والخدمات اللوجستية
Ministry of Transport and Logistic Services

Our work encompasses essential infrastructure and road construction activities, ensuring durability, functionality, and safety. This includes:

- **Bridges Construction** for seamless connectivity.
- **Roadworks**, covering earthworks and asphalt pavement layers for high-quality surfaces.
- **Drainage Systems**, including **Box & Pipe Culverts** and **Median Pipes** for efficient water management.
- **Traffic Safety Measures**, such as **Highway Signs**, **Traffic Markings**, and **Fence Installation** for guidance and security.
- **Lighting Works** to enhance roadway visibility and safety.
- **Road Protection Works**, integrating barriers and reinforcements for infrastructure integrity.



AL-RASS RING ROAD

Al-Qassim Region, Saudi Arabia



Ministry of Transport and logistic services



Construction Supervision



2000-2018



وزارة النقل والخدمات اللوجستية
Ministry of Transport and Logistic Services

Al-Rass Municipality has undertaken extensive asphalt and maintenance work on the city's road network, covering over 1,170,000 square meters. This includes new asphalt works on main roads and maintenance of existing roads and residential neighborhoods. Work includes Wadi Bridge Construction, Road Construction (Earthworks and Rock Blasting, Asphalt Pavement Layers), Box & Pipe Culvert Drainages, Median Pipe Drainages, Highway Signs, Traffic Markings and Other Incidentals.



Building No. 8616, Salah Al Din Al Ayoubi Road,
Al Dhubbat District,
P.O. Box 12623, Riyadh, Kingdom of Saudi Arabia
Phone: +966 (011) 277 5911 Fax: +966 (011) 206 0099
info@daralriyadh.com
www.daralriyadh.com

