



49 YEARS OF EXCELLENCE



TURKI BIN ABDULLAH BIN ABDULRAHMAN

Chairman of the Board

Prince Turki started his career as a professional engineer in the government sector and soon realized the critical need for professional engineering services to cater to the enormous requirements for the various development projects across the country. He established DAR AL RIYADH in February 1975 with a clear vision for it to become one of the leading brands in professional engineering services. Armed with his passion and his own value system, Prince Turki immersed himself in the inner workings of the business since inception and he saw and appreciated the impact of business entities that goes well beyond generating shareholder value to touch individuals, families, and the society at large.

He believed early on that for DAR AL RIYADH to become a sustainable and responsible organization, it needed more than a group of talented engineers and more than a collection of technical standards and practices. DAR AL RIYADH needed a set of guiding principles that would serve as the foundation. Strategic direction and priorities may change from time to time, but these guiding principles remain the same and get stronger with the passage of time. Not only did Prince Turki talk about these principles frequently, but he modeled them through his own practice and decisions. Today, these guiding principles are referred to collectively as DAR AL RIYADH's COMPASS. During his 47 years' tenure as the CEO, DAR AL RIYADH grew multiple folds both organically and through strategic joint ventures all of which are permanent entities registered under the commercial law of Saudi Arabia and are enjoying leading positions in their respective markets.

Prince Turki holds a strong belief that business organizations and leaders have deep responsibility towards all related stakeholders both in conducting business responsibly and through active participation in socially responsible causes. DAR AL RIYADH's history is enriched with many stories where Prince Turki and the management team took courageous decisions to protect the interests of the concerned stakeholders and to remain true to their guiding principles.

Leadership Position:

- Founder and Chief Executive Officer, DAR AL RIYADH Group (February 1975 - December 2019)
- Chairman, DAR AL RIYADH Group (January 2020 – Present)
- Chairman, Saudi Arabian Parsons Limited (January 2011 to Present)
- Chairman, Wipro Arabia Limited (March 2006 – Present)
- Founder and Chairman, Safaah Foundation (April 2011 – Present)

Academic and Professional Qualifications

- Bachelors of Science in Civil Engineering, University of Southern California – Los Angeles
- Professional accreditation of a "Consultant" by the Saudi Council of Engineers.

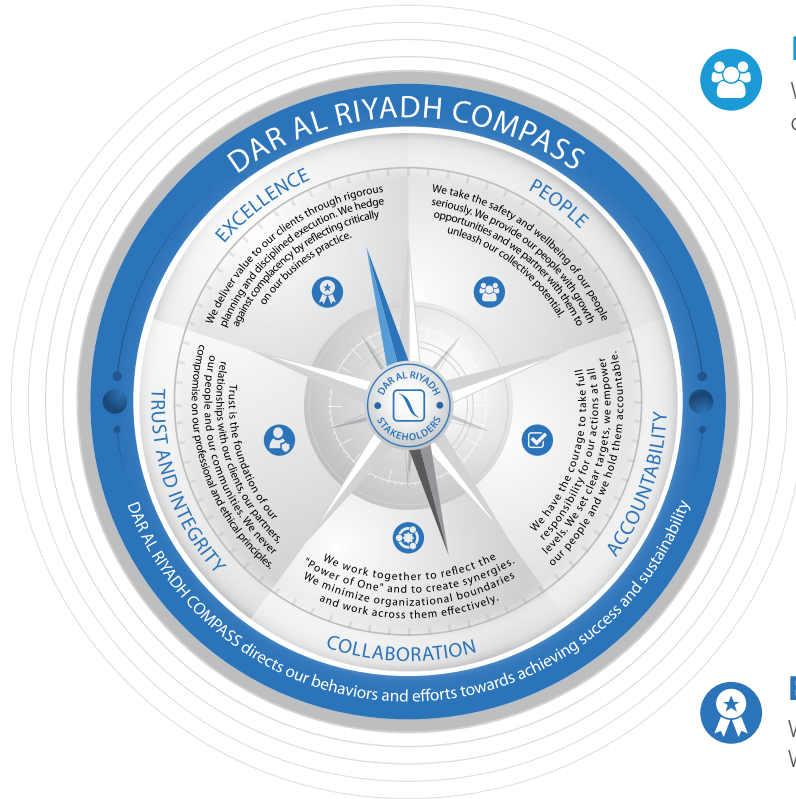
SINCE
1975

ABOUT US

DAR AL RIYADH was established in 1975 to meet the rising demand in Architecture and Engineering Design as well as Construction Supervision services in KSA. Since then, the company has grown with offices in each Province. Our services encompass Master Planning, Urban and Engineering Design, in addition to Petrochemical, Infrastructure, Industrial Buildings, Telecommunications, Environmental, Utilities and Community projects from preliminary studies through site investigation, and culminating in the preparation of contract documents, specifications and construction drawings.

Since its establishment, DAR has provided millions of man-hours of Engineering Services in Design, Project Management and Construction Supervision. Key to DAR's success has been its commitment to the highest standards of excellence in Engineering Consultancy within the Kingdom of Saudi Arabia and the Middle East region.

OUR VALUES



PEOPLE

We take the safety and wellbeing of our people seriously. We provide our people with growth opportunities and we partner with them to unleash our collective potential.



ACCOUNTABILITY

We have the courage to take full responsibility for our actions at all levels. We set clear targets, we empower our people and we hold them accountable.



COLLABORATION

We work together to reflect the "Power of One" and to create synergies. We minimize organizational boundaries and work across them effectively.



TRUST AND INTEGRITY

Trust is the foundation of our relationships with our clients, our partners, our people and our communities. We never compromise on our professional and ethical principles.



EXCELLENCE

We deliver value to our clients through rigorous planning and disciplined execution. We hedge against complacency by reflecting critically on our business practice.

INTERNATIONAL AWARDS



1. ENGINEERING AND DESIGN

Creating buildings, communities and public spaces, enhanced by transportation and utility engineering, our vision is to improve the world in which we live and to create environments that are resilient and sensitive to the environmental impact that they represent.

DAR AL RIYADH's practice includes architecture, building engineering, civil/ structural engineering, MEP engineering, interior design, landscape design, master and urban planning.

Our team has designed and delivered some of the Kingdom's most complex and diverse projects ranging from major commercial nodes such as the King Abdullah Financial District to industrial facilities and master planning for projects like the iconic Saudi Sports Stadium.

As the Kingdom's leading consultants over the last 5 decades, we offer advice and technical expertise on all matters relating to planning, permits and technical assessment for new and refurbishment projects. Our concept and planning expertise for new

Social, Transport or Manufacturing infrastructure is captured in our master planning team based in Riyadh, who delivers efficient and cost-effective solutions to our clients while managing and guiding the different planning approval processes.

Our design team provides engineering and design through all project phases, from concept and schematic design through to detailed design and construction tender package. We work in partnership with our clients to provide practical design solutions that work in Saudi Arabia, while ensuring full compliance with local and international standards. We work with BIM as our design platform and our designs prioritize sustainable solutions.

2. CONSTRUCTION MANAGEMENT AND SUPERVISION

In order to ensure that projects or programs are carried out in accordance with the approved construction documents, contract documents, applicable regulations, project schedule, and any other requirements, DAR AL RIYADH provides timely, professional, and competent oversight, inspection and coordination of the project or program, regardless of its scope or location.

Our experienced team will manage and oversee every facet of your building project. As an independent engineering firm, we provide the following services:

- Place an experienced team on site to implement and execute our clients' projects or programs effectively and in-line with Project Management Institute guidelines.
- Ensure our client's construction project stays on schedule, reduce technical risks, and eliminate construction mistakes through vigilant monitoring.
- Ensure compliance with safety standards and regulations.
- Comply with the relevant building regulations, quality standards and insurance company guidelines.
- Ensure all work conforms to the specified technical documentation and the construction permit.

Our construction supervision services include:

- Design supervision
- Independent third-party verification and certification
- Project management consultant for building, industrial and infrastructure facilities
- Program management consultant for infrastructure plans
- Site supervision per the technical and construction legal requirements
- Continuous supervision of construction works (quality, schedule, and budget)
- Commissioning supervision on quality and schedule
- Testing and commissioning
- Building Information Modeling services (BIM) for civil, building, and industrial projects

3. PROGRAM AND PROJECT MANAGEMENT

Our Program & Project Management team supports clients with the overall planning, coordination, contract, commercial, HSEQ, and project control from initiation to completion and handover. We aim to fulfil the client's requirements to produce a functionally and financially viable project.

We manage all phases of project development from project initiation through planning, environmental clearance, design, construction, commissioning, and closeout. Our services are aimed at making projects more cost-efficient and punctual without compromising quality. Our team's capabilities combine our expertise and experience in planning, engineering, reporting, and management. Combining extensive industry experience with best-in-class project management processes, techniques, and tools for success, our team establishes an appropriate and effective assurance regime and

identifies and addresses any deviations from the plan as they occur.

Program and Project Management services include:

- Project Management
- Project Controls:
- Cost Management
- Schedule Management
- Risk Management
- Document Control Management
- Contracting and Procurement
- Logistics

4. GEOSPATIAL SERVICES

Our approach is using the latest technologies, geo-intelligence, and enterprise solutions by our professional technical staff.

In our geospatial services and solutions business line, we create or customize smart and professional solutions and products that both meet our clients' immediate needs and target their long-term objectives. Because geospatial smart technology has become an essential part of everyday life, DAR AL RIYADH harnesses location intelligence to differentiate in the Saudi Market. Geospatial Services include:

- Aerial – Drone Photogrammetry
- Geodesy & Survey Works
- GIS Services & Applications
- Topography & Hydrology Surveying
- Digital Twin/ BIM GIS Integration
- Mobile Mapping and 3D Modeling
- Cadastral Surveying and Mapping
- Smart City Assessment & Planning

5. ADVISORY SERVICES

DAR AL RIYADH has provided Saudi Arabian clients with high-quality technical, project management, and construction management services for the past 49 years.

In adopting a strategy of holistic services provision to suit our changing client needs, DAR AL RIYADH has developed an Advisory business line providing expert consultancy services in the following areas:

- ESG & Sustainability
- Digital, Infratech and Smart Cities
- Asset and Facilities Management
- Infrastructure Finance and PPP





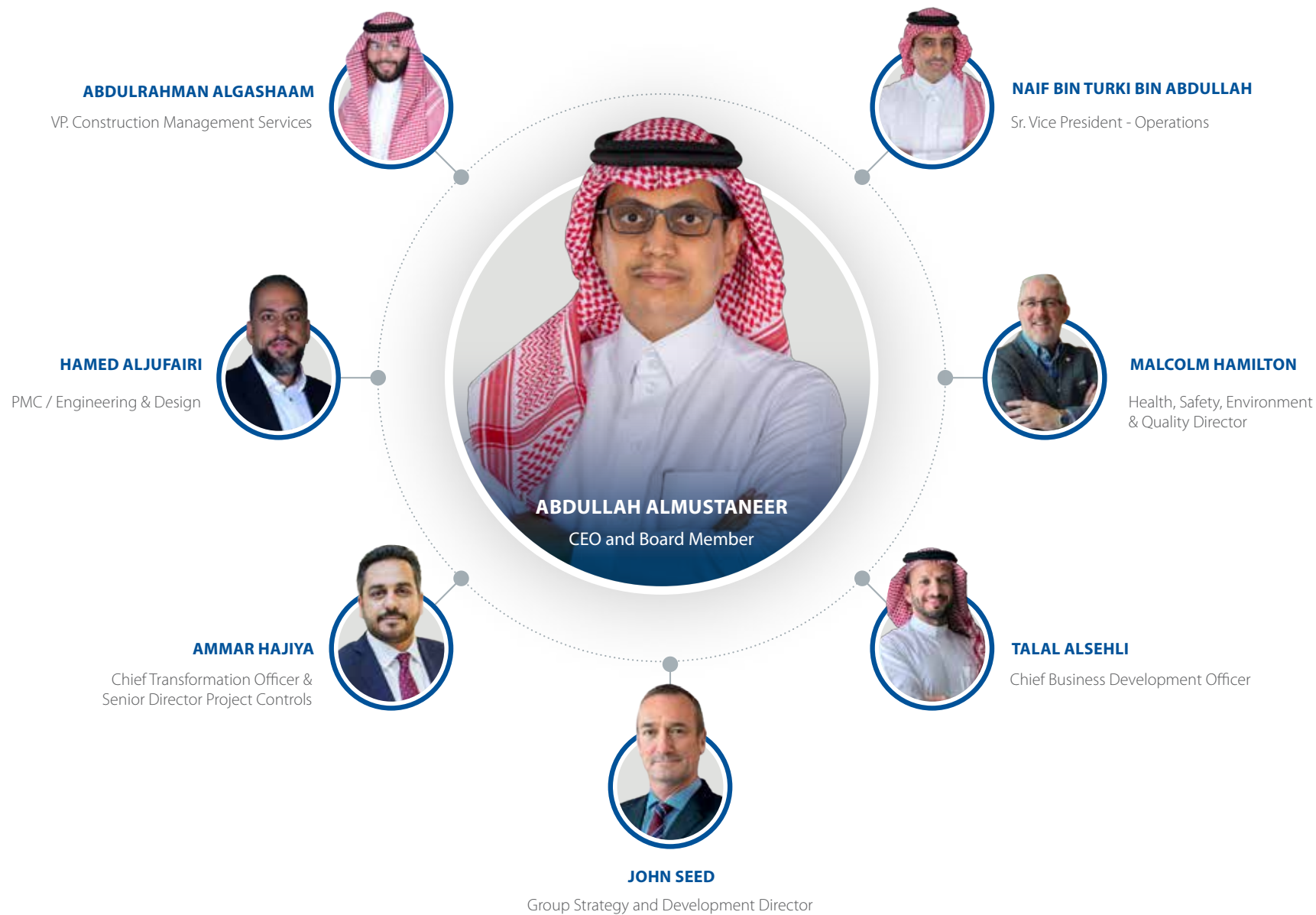
OUR ROLE IN VISION 2030

As Saudi Arabia undergoes rapid economic and social transformation, guided by Vision 2030, DAR AL RIYADH continues to grow and actively contribute to the country's success by supporting the many investment programs in the infrastructural segments.

Beyond the legal requirements, we are also committed to nurturing and growing local talent essential for local communities' social and economic development. We aim to attract and retain ambitious, high-caliber graduate and experienced candidates for all engineering disciplines, including project and construction management. We provide comprehensive training programs and mentoring

for graduates. In addition, we train young Saudi nationals to enhance their job skills and facilitate employment at the end of the training. Today, DAR AL RIYADH employs around 50% of Saudi Nationals and is a leader in the industry.

LEADERSHIP TEAM





Permanent office Project office

Presence Since
1975

49+
Years of Experience



100%
Saudi Owned



1400+
Specialists & Experts



40%
Saudization



49%
National Local Content

PROVEN HSEQ SYSTEMS

Quality Management and Health and Safety Systems

DAR AL RIYADH's commitment to safety, quality and environmental responsibility allows our team to continually work towards improving processes, ensuring quality, and providing the best possible systems and service to our customers and partners. We have obtained and maintained the following ISO certifications:

- ISO 45001: 2018 - Occupational Health and Safety
- ISO 9001: 2015 – Quality Management Systems
- ISO 14001: 2015 – Environmental Management Systems



* Accredited HSEQ Systems



OUR PURPOSE

Deliver a sustainable built environment for, and with, Saudi nationals by doing projects right and challenging accepted norms.

COMBINING LOCAL KNOWLEDGE WITH WORLD CLASS SKILLS

OUR PROJECTS







King Abdullah Financial District (KAFD)

Riyadh, KSA



CLIENT

Raidah Investment Company



TIME FRAME

2009 - 2025



SERVICE PROVIDED

Construction Management Supervision and Design Review



PROJECT HIGHLIGHTS

Built to be Saudi Arabia's most important financial center, KAFD was designed by more than 25 of the world's most prominent architects and includes five key asset types: offices, retail and F&B, residential, hotels and entertainment.

DAR AL RIYADH was appointed as the Construction Management Consultant for 55 towers within the district, providing Resident Engineer services including post contract cost management and contract administration (cost control, value engineering, procurement, strategic advice and dispute resolution services).

The team supervised the construction of all works done by the Design & Build Contractors from construction through to handover and defects liability for each building and all associated infrastructure.

KAFD is the only LEED platinum certified Neighborhood Development in the world, as recognized by the U.S Green Building Council (USGBC). Its sustainability footprint across the destination extends to over 15 certifications, across platinum, gold, silver status, with this number growing.

Further to the construction management services, DAR AL RIYADH is providing design review services for the development's fit-out elements.







King Faisal Air Academy (KFAA)

Al Majma'ah, KSA



CLIENT

Ministry of Defense Royal Saudi Air Forces (MOD)



TIME FRAME

2019 - 2024



SERVICE PROVIDED

PMC, Design and Construction Management



PROJECT HIGHLIGHTS

DAR AL RIYADH was appointed to provide project management consultancy, design management and site supervision services for the relocation of the King Faisal Air Academy. The facilities, originally built in the center of Riyadh, are being relocated to the Al Majma'ah Governorate, 200 kilometers north of the capital, to a site with a total area of 314 km².

The scope covers the execution of all civil, structural, architectural, mechanical and electrical works. Other assets include security fences and gates, infrastructure and roads, operations infrastructure, service facilities such as operation, maintenance, intelligence and air police, technical facilities for students and residential units for both families and bachelors.

Moreover, DAR AL RIYADH engaged specialists in aviation services and technical studies such as airplane refueling, navigation and control systems, aviation simulators, environmental and renewable power studies.

As the PMC, DAR AL RIYADH is tasked with project planning, management and control of financial monitoring, timetables, quality standards, risk, change orders, reports and closeout.







Operation and Maintenance Projects for Jeddah Municipality

Jeddah, KSA



CLIENT

Jeddah Municipality



TIME FRAME

2024 - 2027



SERVICE PROVIDED

Project Management Office (PMO)



PROJECT HIGHLIGHTS

DAR AL RIYADH is representing Jeddah Municipality as PMO consultant, managing 90 operations and maintenance projects with various contractors throughout Jeddah City, over 2400 km².

The scope of work includes providing technical, supervisory, management and administrative services in relation to the various agreements established by Jeddah Municipality to operate and maintain the city's infrastructure.

DAR AL RIYADH is providing integrated operations and maintenance management services, preparing plans for operation and maintenance projects, coordination, management, and quality assurance, testing materials, reviewing submitted construction documents and coordinating Certification processes, project records, preparation of work orders and guarantees and settlement of final accounts.

The assets under this scope include bridges, roads and road beautification elements, garden and landscaping works, municipal buildings, museums, street lighting, monuments, irrigation networks, pumping stations, open spaces and lighting.





Saudi Arabia Railways Program

Dammam, Al-Hassa and Riyadh, KSA



CLIENT

Saudi Arabia Railways



TIME FRAME

2018 - 2025



SERVICE PROVIDED

PMC, Technical Support and Construction Management



PROJECT HIGHLIGHTS

Saudi Arabia Railways is the owner and operator of the Kingdom's railway network. DAR AL RIYADH was appointed as a project management consultant, providing technical support and supervision services to ensure the completion of railways, infrastructure, and safety work as well as supplementary works and modifications for construction in multiple locations.

DAR AL RIYADH's relationship with the client spans several years, over which the company has participated in several projects from early infrastructure to train stations, warehouses and administrative buildings. Depending on the tasks, the company has provided resources on site, at the client's offices and from our headquarters in Riyadh.







National Housing Company Programs

Throughout KSA



CLIENT

National Housing Company



TIME FRAME

2012 - 2025



SERVICE PROVIDED

Supervision, Design, and PMC Services



PROJECT HIGHLIGHTS

DAR AL RIYADH has worked with the National Housing Company since 2012, providing engineering and management services for projects throughout the Kingdom.

The housing programs manage over 50,000 residential units as well as infrastructure networks, mosques, schools, roads, public services and landscape.

As well as design and supervision services, our on-site teams provide project planning, management and control of financial monitoring, timetables, quality standards, risk, change orders, reports and closeout.







Ministry of Housing Program

Throughout KSA



CLIENT

Ministry of Housing



TIME FRAME

2013 – Ongoing



SERVICE PROVIDED

Design and Construction Management



PROJECT HIGHLIGHTS

DAR AL RIYADH has delivered the planning and engineering design work for over 100 housing development projects distributed throughout the Kingdom, with a total area exceeding 250 million sqm. This incorporated over 135,000 housing units and associated service, utilities, and commercial plots. DAR AL RIYADH developed a master plan in accordance with local authority regulations while maximizing the number of housing unit plots, services, and facilities.

DAR AL RIYADH works with the Ministry of Housing in close coordination with the governmental service providers and directorates Kingdom-wide.

The team provided full infrastructure design and supervision for 37 sites, as well as roads and drainage design for an additional 63 sites. The packages include 2,400 km of roads, potable water and firefighting network pipelines, sewer pipelines, irrigation, storm drainage, underground power cables, telecommunication ducts, water storage tanks serving the potable water and irrigation systems, sewer lift stations and sewage treatment plants.

The team did a remarkable job coordinating with service providers to obtain approvals for required demand, suitable tie-in locations, and detailed design approvals.







Digital City (formerly known as ITCC)

Riyadh, KSA



CLIENT

Raidah Investment Company



TIME FRAME

2009 - 2021



SERVICE PROVIDED

Construction Supervision



PROJECT HIGHLIGHTS

Located in the heart of Riyadh, Digital City is Saudi Arabia's first mixed-use development with commercial, residential, and retail offerings. It is a multi-purpose community with an innovative office park featuring contemporary high-rise buildings of cutting-edge architecture and sustainable design.

The development is designed to stimulate and nurture a knowledge-based economy by cultivating an innovative business environment and a dynamic workplace.

DAR AL RIYADH was tasked with the Construction Management of eleven buildings within the development. The scope included post contract cost management and contract administration (cost control, value engineering, procurement, strategic advice and dispute resolution services).

The project includes luxury hotels, leisure facilities, a convention center, residential apartments, mosque, a technical college, government service buildings and a district cooling plant with a total cooling capacity of 35,000 TR.







Jabal Omar Development

Makkah al-Mukarramah, KSA



CLIENT

Jabal Omar Development Company



TIME FRAME

2012 - 2025



SERVICE PROVIDED

Construction Management and Supervision



PROJECT HIGHLIGHTS

This prestigious mixed-use destination in the center of Makkah-Al Mukarramah is comprised of a podium and 4 towers. The podium will contain commercial areas, car park, hotel lobbies and back of house. The four hotel towers are intended to be a 5-star hotel run by well-known international hotel operator - Jumeirah, and consists of permanent and seasonal residential apartments, hotels, commercial areas, convention facilities, public parking and associated support facilities such as public assembly and prayer areas.

The project is testament of Jabal Omar Development Company's commitment to sustainable growth and to the preservation of Saudi Arabia's cultural heritage.

DAR AL RIYADH provided Construction Supervision Consultancy Services for the project, which has a land area of 11,375 m² and built-up floor area of approximately 198,451 m² distributed in podium, 4 towers of 24 floors each, 96 apartments, and a 1033-key hotel.







MODON - Industrial Cities

Dammam, Jeddah, and Sudair, KSA



CLIENT

Saudi Industrial Property Authority (MODON)



TIME FRAME

2012 - 2024



SERVICE PROVIDED

"PMC and Construction Management



PROJECT HIGHLIGHTS

MODON is responsible for the establishment, development and operation of industrial estates and technology zones in partnership with the private sector, and to provide integrated services to meet investors' requirements.

DAR AL RIYADH has provided PMC services for MODON since 2012, covering design management for wet utilities (water, wastewater, irrigation and storm drainage system), dry utilities (high, medium, low tension electrical assets and telecommunication), mechanical engineering, architecture, master planning and landscape, roads and infrastructure engineering, structural engineering, BIM and QC/QA.

The team has ensured that the projects satisfy the spatial and functional needs of the users, are designed specifically for the actual land use parameter, are designed for the minimum capital cost consistent with lowest life cycle costs, and meet all applicable codes and regulations.

Working closely with the client over more than a decade, the team understands each project's objectives and operational requirements, prepares and reviews project briefs and specifications and engages specialists, verifiers and advisors as necessary.





الهيئة الملكية
للجبل وينبع
Royal Commission for Jubail & Yanbu



Royal Commission for Jubail and Yanbu Program

Jubail, KSA



CLIENT

Royal Commission for Jubail and Yanbu



TIME FRAME

2011 – Ongoing



SERVICE PROVIDED

Engineering & Architecture



PROJECT HIGHLIGHTS

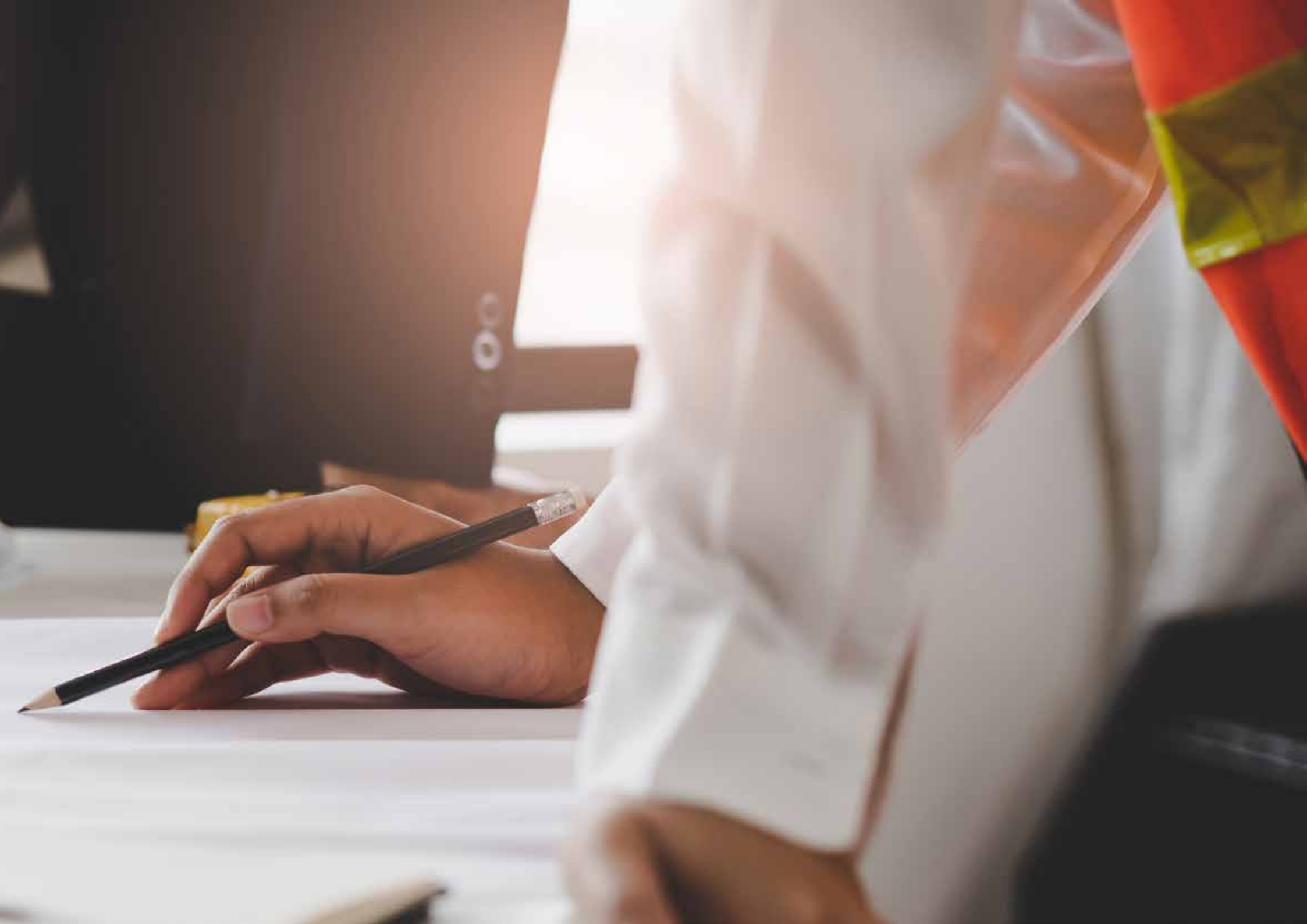
The Royal Commission has established the Jubail and Yanbu Industrial Cities Services Company to raise the competitiveness among RC cities by enhancing the efficiency of services and infrastructure, which will give the private sector additional opportunities to invest in the fields of construction, housing, and logistics services, in addition to transportations and energy fields and other commercial opportunities.

Throughout DAR AL RIYADH's long relationship with the Royal Commission of Jubail and Yanbu, the team has provided design services for numerous assets over more than 300 hectares of land.

The scope of work includes the delivery from concept design to procurement documentation for infrastructure, utility networks, roads, electrical substations and transmission lines, district cooling plants and network, living quarters for staff, headquarter and administration buildings, offshore facilities, residential units, railroads, ports and an airport.

All projects are delivered in consideration of sustainable design and value engineering principles, and several are designed to LEED standards.







مدينة محمد بن سلمان
Mohammed Bin Salman City
Nonprofit غير الربحية

MiSK City

Riyadh, KSA



CLIENT

MiSK City Company



TIME FRAME

2023 - 2025



SERVICE PROVIDED

PMC, Design Management and Construction Supervision



PROJECT HIGHLIGHTS

MiSk City is a multi-phased city development which will create a new district for Riyadh and will serve as an incubation neighborhood for young Saudis to embrace the central themes of the Kingdom's Vision 2030.

DAR AL RIYADH has been tasked with the project, design and construction management services for several projects and construction works packages within the district, covering all design stages, permits and approvals, procurement, construction, fit out and handover, all with coordinated management of the overall program and achieving key milestones as established by Misk City Company.

DAR AL RIYADH is responsible for site-wide infrastructure and assets, including civil works and utilities for public realm and landscaping, fire station, warehouses, FM buildings, solid waste transfer stations, a gas farm and a wastewater treatment plant.

Additionally, the team provided management services for the delivery of Misk's Schools, with a total area of 68,000 m², and its mobility hubs, spanning 110,000 m² on three separate plots.







Knowledge Economic City Hub

Al-Madinah al-Munawwarah, KSA



CLIENT

Knowledge Economic City (KEC)



TIME FRAME

2023 – 2025



SERVICE PROVIDED

Construction Supervision



PROJECT HIGHLIGHTS

Considered the largest in the city of Madinah, this integrated center includes a commercial complex, a Hilton hotel, a luxurious residential tower, entertainment venues for children and adults, a sports health club and a boulevard located on both sides of modern restaurants and cafes. The project also includes wide pedestrian squares and a public park.

The project that aims to provide an urban environment and a distinctive lifestyle for residents and visitors of Madinah, inspired by the metropolitan character of the city within a multi-use hub that combines hiking, shopping, housing, and leisure services.

Designed to the latest urban planning foundations for shopping and entertainment areas, the project includes a shopping mall with a built-up area of 180,000 m², a 19-floor, 350 room hotel with a BUA of 48,000 m² and a 19-floor, 110-key residential tower with a BUA of 31,000 m². The development will house an interactive museum about Madinah, a closed entertainment hall, and a cinema.

The project also includes an internal and external boulevard, and a public park with an area of 45,000 m², which embraces recreational activities and programs, celebrations, restaurants, cafes, and the heritage area within an integrated and interconnected project. Upon completion of all its stages, the project will be the main meeting place for residents and visitors of Madinah.







GOSI Housing Compound at Al Rimal District

Riyadh, KSA



CLIENT

General Organization Social Insurance



TIME FRAME

2013 - 2021



SERVICE PROVIDED

Design Services and Construction Management

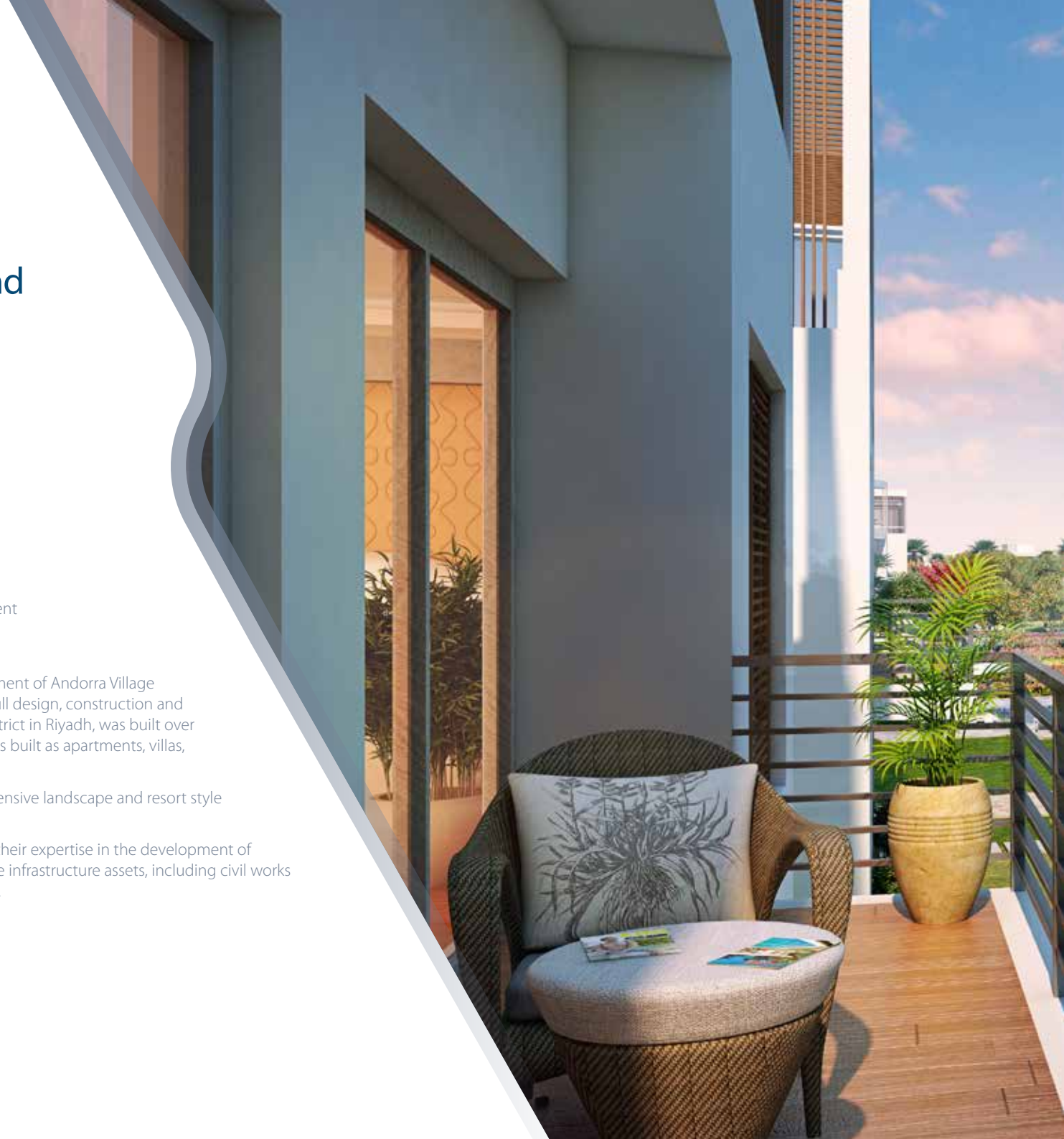


PROJECT HIGHLIGHTS

DAR AL RIYADH was involved in the development of Andorra Village Compound from master planning, through full design, construction and handover. The project, located at Al Rimal District in Riyadh, was built over 670,000 m² and includes 1250 residential units built as apartments, villas, townhouses and duplexes.

Other areas include retail, sports facilities, extensive landscape and resort style facilities.

DAR AL RIYADH's design team implemented their expertise in the development of structural, mechanical, electrical and site-wide infrastructure assets, including civil works and utilities for public realm and landscaping.







وزارة الثقافة
Ministry of Culture

Ministry of Culture - HQ

Riyadh, KSA



CLIENT

Diriyah Gate Development Authority (DGDA)



TIME FRAME

2020 - 2024



SERVICE PROVIDED

Design Services and Construction Management



PROJECT HIGHLIGHTS

DAR AL RIYADH provided multi-disciplinary design services for the new headquarters building for the Saudi Ministry of Culture. This high-end office and community facility was designed with collaboration, efficiency, and innovation in mind.

Established in 2018, the Ministry of Culture seeks to maximize the cultural sector's potential, enriching the lives of the people of Saudi Arabia. Crucial to the delivery of Saudi Vision 2030, the Ministry's new headquarters complex will support key aspirations of promoting culture as a way of life.

The building will house a number of commissions including film, heritage, libraries, music, theater and performing arts, literature, fashion, culinary arts, museums, architecture, and visual arts.

Designed in the traditional Najdi architectural style, the new complex will be integrated into the urban fabric of the northern part of the Diriyah Gate Development with pedestrian entrances and food and beverage destinations along the streets and laneways. The site is within walking distance of the lifestyle and retail precinct of Diriyah Square and will obtain LEED Platinum certification.

The project's built-up area of 79,000 m² is distributed as 2 basements, ground floor, 2 upper levels and roof. DAR AL RIYADH was involved with this project from concept design to completion of tender documentation and is providing construction phase services up to delivery of the finished building.







Red Sea
Global

The Red Sea Coastal Village

Red Sea, KSA



CLIENT

Red Sea Global



TIME FRAME

2021 - 2024



SERVICE PROVIDED

Construction Management



PROJECT HIGHLIGHTS

The Coastal Village provides living, visiting, working, and recreational facilities for the senior management staff under Red Sea Global as well as its consultants, contractors, and other vendors participating in The Red Sea Project. It incorporates the latest concepts in co-working and community living spaces, enabling the residents, visitors and their family members to interact and collaborate in a variety of comfortable public spaces for both work and recreation.

DAR AL RIYADH provided construction management services for the construction of 40 accommodation buildings, cafeterias and service areas. The team supervised the execution of all civil, structural, architectural, mechanical and electrical works, as well as all associated public utilities networks that enable the operation of the facility.







ROSHN

ROSHN Communities

Throughout KSA



CLIENT

ROSHN



TIME FRAME

2022 - Ongoing



SERVICE PROVIDED

Design Services



PROJECT HIGHLIGHTS

Sharing the common goal of transforming the way people live, work and play in Saudi Arabia, DAR AL RIYADH has provided design services for several of ROSHN's projects across the Kingdom. The projects are large townships with community facilities where the design team has implemented their expertise in the development of structural, mechanical, electrical and infrastructure design. The involvement of DAR AL RIYADH has spanned from concept design to IFC documentation.

Moreover, DAR AL RIYADH supports ROSHN in obtaining approvals from authorities, title deeds for plots and residential units, land surveying and site boundary demarcation. Assets include single family units inclusive of all services, secondary infrastructure and landscaping.







Oxagon Village Public Safety Assets

NEOM, KSA



CLIENT

NEOM



TIME FRAME

2023 - 2024



SERVICE PROVIDED

Design Services



PROJECT HIGHLIGHTS

Oxagon, NEOM's industrial city, will be one of the world's largest ports and logistic hubs. As part of Oxagon's residential community, DAR AL RIYADH is developing the design up to tender stages for the Central Public Safety Response Station (fire & police station) and the Southern Public Safety Response Station (fire station).

The two stations together cover the required firefighting and policing requirements in OXAGON Village. Due to the nature of the phasing of the development, the Central station will be operation in the first phase of the island's go-live and provides the essential public emergency response functionalities. As the village grows, the Southern station will expand the island's public safety response capacity, whilst introducing additional functionalities.







Qiddiya Coast

Jeddah, KSA



CLIENT

Qiddiya Investment Company



TIME FRAME

2023 - 2026



SERVICE PROVIDED

Construction Management and Design Review



PROJECT HIGHLIGHTS

Qiddiya coast, with a site area of 13.5 km² and over 18 km of coast overlooking pristine waters, will be Qiddiya's entertainment area along the Red Sea coast. The project will include public leisure areas, hospitality, residential, retail and social infrastructure such as schools, mosques and clinics.

DAR AL RIYADH's scope of work covers the Early Works package for 10.7 km² of the site, bringing it up to formation level ahead of the infrastructure and buildings work packages. The package covers site set up, lighting, contractor site accommodation, site offices for the employer's and consultants' use, general site clearance & vegetation removal and disposal, demolition and disposal of existing structures, ground testing, trial pits, dewatering, excavation, filling, material testing, ground improvement, site fencing, security gate and construction access road.





49 Years of Serving Saudi Clients



 الشركة السعودية للكهرباء Saudi Electricity Company	 JOUR	 وزارة التعليم Ministry of Education	 IHG InterContinental Hotels Group	 SIEMENS	 مرافق MARAFIQ
 طيبة للاستثمار TAIBA INVESTMENTS	 البنك السعودي الهولندي Saudi Hollandi Bank	 Khalj	 بترو رابغ Petro Rabigh	 DAMAC LIVE THE LUXURY	 المراكز العربية Arabian Centres
 الزامل للحديد ZAMIL STEEL	 السلام لصناعة الطيران ALSALAM AEROSPACE INDUSTRIES	 سيدكو SIDCO	 Nesma وشركاهم & Partners	 مؤسسة سلطان بن عبد العزيز آل سعود الخيرية SULTAN BIN ABDULAZIZ AL-SAUD FOUNDATION	 EMAAR
 مصانع الشرق AL SHARQ FACTORIES	 مستشفى الملك فيصل التخصصي ومركز الأبحاث King Faisal Specialist Hospital & Research Centre	 صدارة Sadara	 بيتك baitek	 سلطة الطيران القوات الجوية SUDAN	 موبايلي Mobily
 شركة الرياض الرياض ARRIYADH DEVELOPMENT CO.	 وزارة المياه والكهرباء MINISTRY OF WATER & ELECTRICITY	 معادن MA'ADEN	 Human Resources and Social Development	 وزارة الاتصالات وتقنية المعلومات MINISTRY OF COMMUNICATIONS AND INFORMATION TECHNOLOGY	 وزارة الصحة Ministry of Health

daralriyadh.com