



49 YEARS OF EXCELLENCE



دار الرياض

DAR AL RIYADH



Chairman of the Board

TURKI BIN ABDULLAH BIN ABDULRAHMAN

Prince Turki started his career as a professional engineer in the government sector and soon realized the critical need for professional engineering services to cater to the enormous requirements for the various development projects across the country. He established DAR AL RIYADH in February 1975 with a clear vision for it to become one of the leading brands in professional engineering services. Armed with his passion and his own value system, Prince Turki immersed himself in the inner workings of the business since inception and he saw and appreciated the impact of business entities that goes well beyond generating shareholder value to touch individuals, families, and the society at large.

He believed early on that for DAR AL RIYADH to become a sustainable and responsible organization, it needed more than a group of talented engineers and more than a collection of technical standards and practices. DAR AL RIYADH needed a set of guiding principles that would serve as the foundation. Strategic direction and priorities may change from time to time, but these guiding principles remain the same and get stronger with the passage of time. Not only did Prince Turki talk about these principles frequently, but he modeled them through his own practice and decisions. Today, these guiding principles are referred to collectively as DAR AL RIYADH's COMPASS. During his 47 years' tenure as the CEO, DAR AL RIYADH grew multiple folds both organically and through strategic joint ventures all of which are permanent entities registered under the commercial law of Saudi Arabia and are enjoying leading positions in their respective markets.

Prince Turki holds a strong belief that business organizations and leaders have deep responsibility towards all related stakeholders both in conducting business responsibly and through active participation in socially responsible causes. DAR AL RIYADH's history is enriched with many stories where Prince Turki and the management team took courageous decisions to protect the interests of the concerned stakeholders and to remain true to their guiding principles.

Leadership Position:

- Founder and Chief Executive Officer, DAR AL RIYADH Group (February 1975 - December 2019)
- Chairman, DAR AL RIYADH Group (January 2020 – Present)
- Chairman, Saudi Arabian Parsons Limited (January 2011 to Present)
- Chairman, Wipro Arabia Limited (March 2006 – Present)
- Founder and Chairman, Safaah Foundation (April 2011 – Present)

Academic and Professional Qualifications

- Bachelors of Science in Civil Engineering, University of Southern California – Los Angeles
- Professional accreditation of a "Consultant" by the Saudi Council of Engineers.

Leadership Team



ABDULLAH ALMUSTANEER
Chief Executive Officer



ABDULRAHMAN ALGASHAAM
VP Construction Management Services



NAIF BIN TURKI BIN ABDULLAH
Sr. Vice President - Operations



HAMED ALJUFAIRI
VP PMC / Engineering & Design



MALCOLM HAMILTON
Health, Safety, Environment & Quality Director



AMMAR HAJIYA
Chief Transformation Officer & Senior Director Project Controls



TALAL ALSEHLI
Business Development Director



JOHN SEED
Group Strategy and Development Director

Leadership Team

About Us

DAR AL RIYADH was established in 1975 to meet the rising demand in Architecture and Engineering Design as well as Construction Supervision services in KSA. Since then, the company has grown with offices in each Province. Our services encompass Master Planning, Urban and Engineering Design, in addition to Petrochemical, Infrastructure, Industrial Buildings, Telecommunications, Environmental, Utilities and Community projects from preliminary studies through site investigation, and culminating in the preparation of contract documents, specifications and construction drawings.

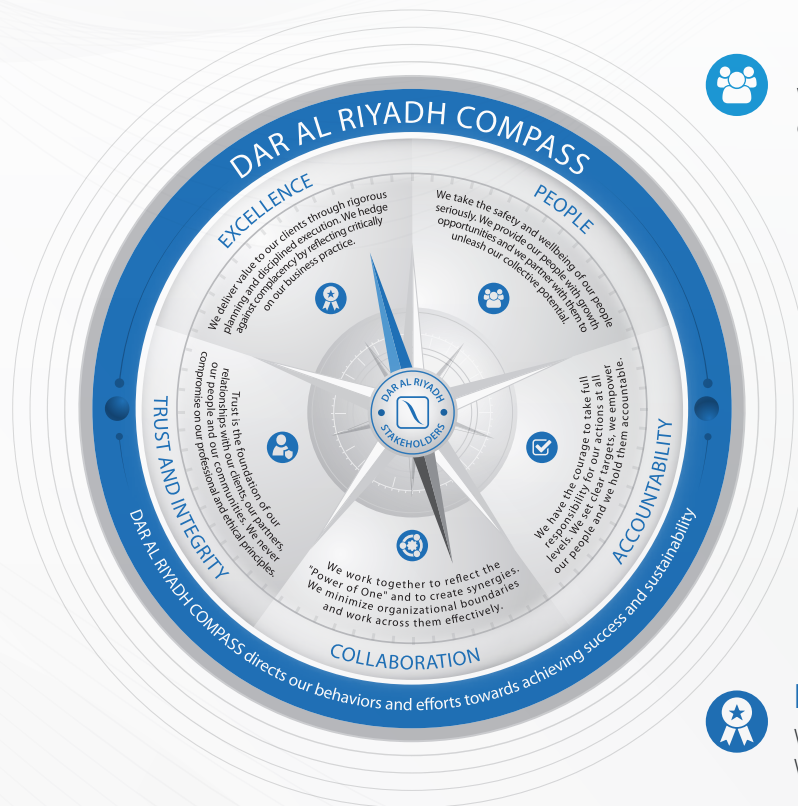
Since its establishment, DAR has provided millions of man-hours of Engineering Services in Design, Project Management and Construction Supervision. Key to DAR's success has been its commitment to the highest standards of excellence in Engineering Consultancy within the Kingdom of Saudi Arabia and the Middle East region.



SINCE
1975



Our Values



PEOPLE

We take the safety and wellbeing of our people seriously. We provide our people with growth opportunities and we partner with them to unleash our collective potential.



ACCOUNTABILITY

We have the courage to take full responsibility for our actions at all levels. We set clear targets, we empower our people and we hold them accountable.



COLLABORATION

We work together to reflect the "Power of One" and to create synergies. We minimize organizational boundaries and work across them effectively.



TRUST AND INTEGRITY

Trust is the foundation of our relationships with our clients, our partners, our people and our communities. We never compromise on our professional and ethical principles.



EXCELLENCE

We deliver value to our clients through rigorous planning and disciplined execution. We hedge against complacency by reflecting critically on our business practice.

INTERNATIONAL AWARDS

atd Association for Talent Development

2023

BEST

AWARD WINNER



CIPD
Middle East
People Awards



Our Strategy

01

Move from traditional client base



02

Consulting and Planning expertise



03

Project management skills



04

Construction Academy



05

Strategic partnerships





Our Purpose

Deliver a sustainable built environment for, and with, Saudi nationals by doing projects right and challenging accepted norms.



1. CONSULTING AND MASTERPLANNING

As the Kingdom's leading consultants, we offer advice and technical expertise on all matters relating to planning, permits and technical assessment for new and refurbishment projects.

Our concept and planning expertise for new Social, Transport or Manufacturing infrastructure is captured in our master planning team based in Riyadh. They deliver efficient and cost-effective solutions to our clients, while managing and guiding the different planning approval processes. These can often be time consuming and complex in Saudi Arabia.



2. ENGINEERING AND DESIGN

We provide engineering and design through all project phases, from schematic design through to detail design and construction tender package.

We work in partnership style with our clients to provide practical design solutions that work in Saudi Arabia, while ensuring full compliance with local and international standards. We work with BIM as our design platform and our designs include conservation of precious natural resources and waste disposal.

We provide LEED, Estiama and BREEM analysis and are members of the Saudi Green Building Council and the US Green Building Council.

Our engineering disciplines cover:

- Architecture
- Landscape
- Structural & Civil
- Mechanical, Electrical & Plumbing (MEP)

3. FIELD SERVICES

How complex your construction project is, our Field Services professionals provide the perfect solutions for the challenges of constructing in Saudi Arabia.

Through our 47 years of managing and supervising construction projects we know the contractor community and their capabilities inside out. We generate value for our clients by supervising and controlling your construction site in every detail: from all quality aspects including design & material compliance, safety, cost, and schedule.

We tailor each team to the specific site characteristics and construction contractor, if already awarded. We have over 800 supervision resources assigned daily across the country and can rely on our home office for any engineering or technical support.

Our field services cover:

- Project Management Consulting (PMC)
- Construction Supervision
- Cost Management / Quantity Surveying
- Technical Management

4. PROJECT MANAGEMENT

We manage the phases of project development from master-plan review, concept, schematic and detail design, tendering through to construction, commissioning and project closeout.

Our Project Management (PMC) team supports clients with the overall planning, coordination, management, and control of the project from beginning to handover. It is our aim to fulfill your expectations and deliver a functional compliant and financially viable asset.



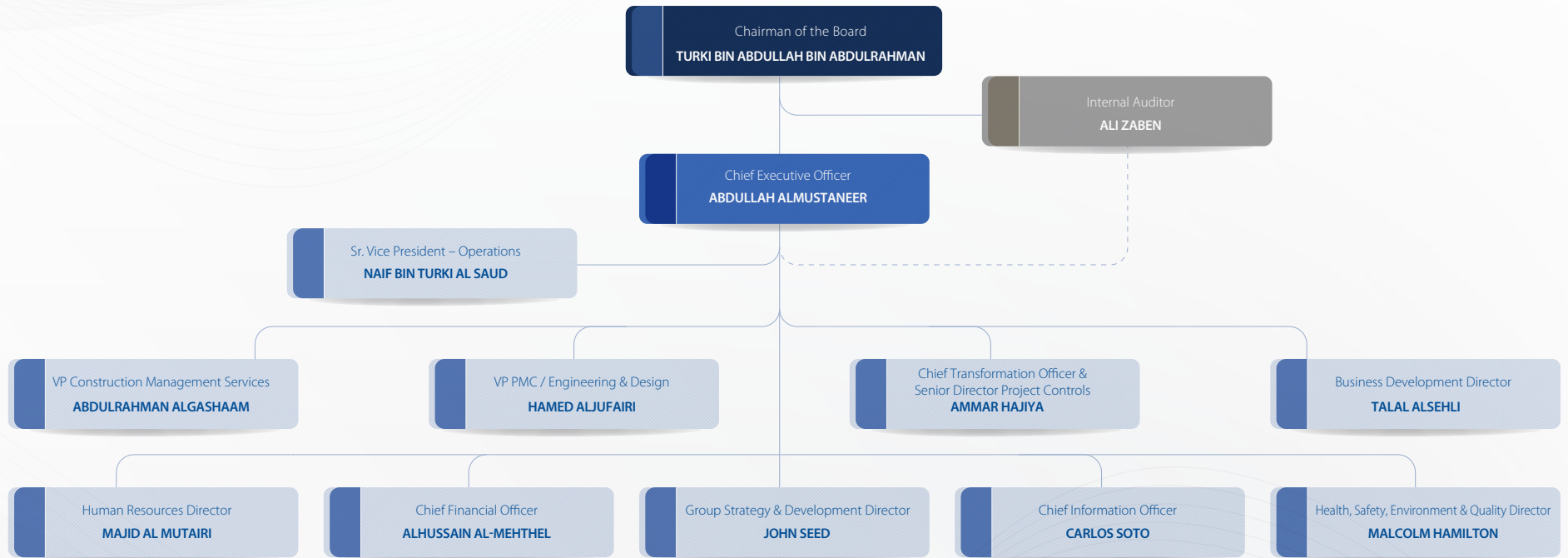


OUR ROLE IN VISION 2030

As the Saudi Arabia undergoes rapid economic and social transformation, guided by the Vision 2030, DAR AL RIYADH continues to grow and actively contribute to the success of the country by supporting the many investment programs in the infrastructural segments.

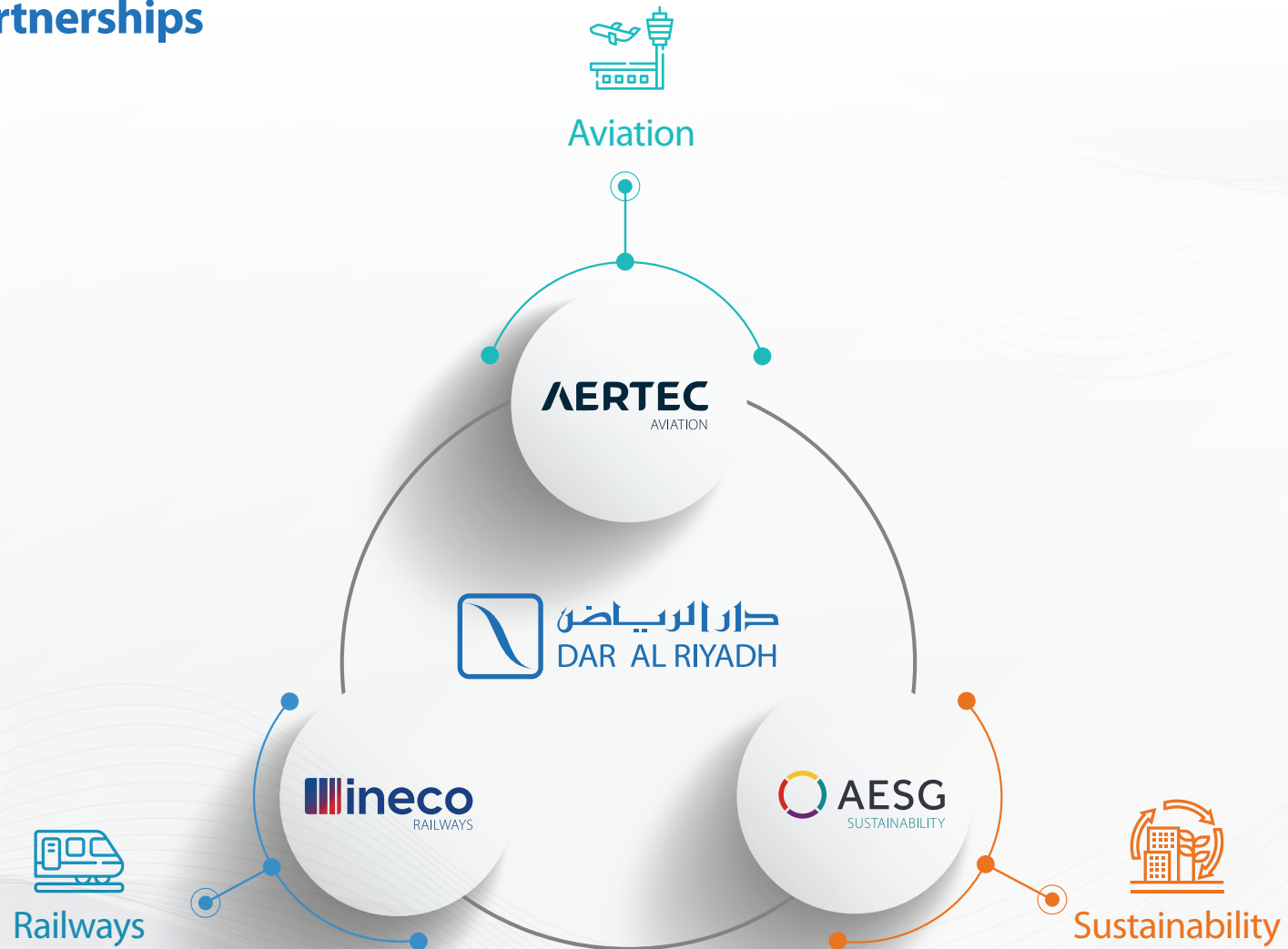
We are also committed, beyond the legal requirements, to nurture and grow local talent essential for the social and economic development of local communities. It is our aim to attract and retain ambitious, high caliber graduate and experienced candidates for all engineering disciplines including project and construction management. We provide comprehensive training programs and mentoring for graduates. In addition, we train young Saudi nationals to enhance their job skills, as well as facilitate employment at the end of the training. Today DAR AL RIYADH employs close to 50% Saudi Nationals and is a leader in our Industry.

Dar Al Riyadh Organization Chart



Our Strategy

Global Partnerships



Proven HSEQ systems

Quality Management and Health and Safety Systems

Review, Monitor and Audit the Contractor's Project Quality and Safety Plans in accordance with DAR's accredited systems:

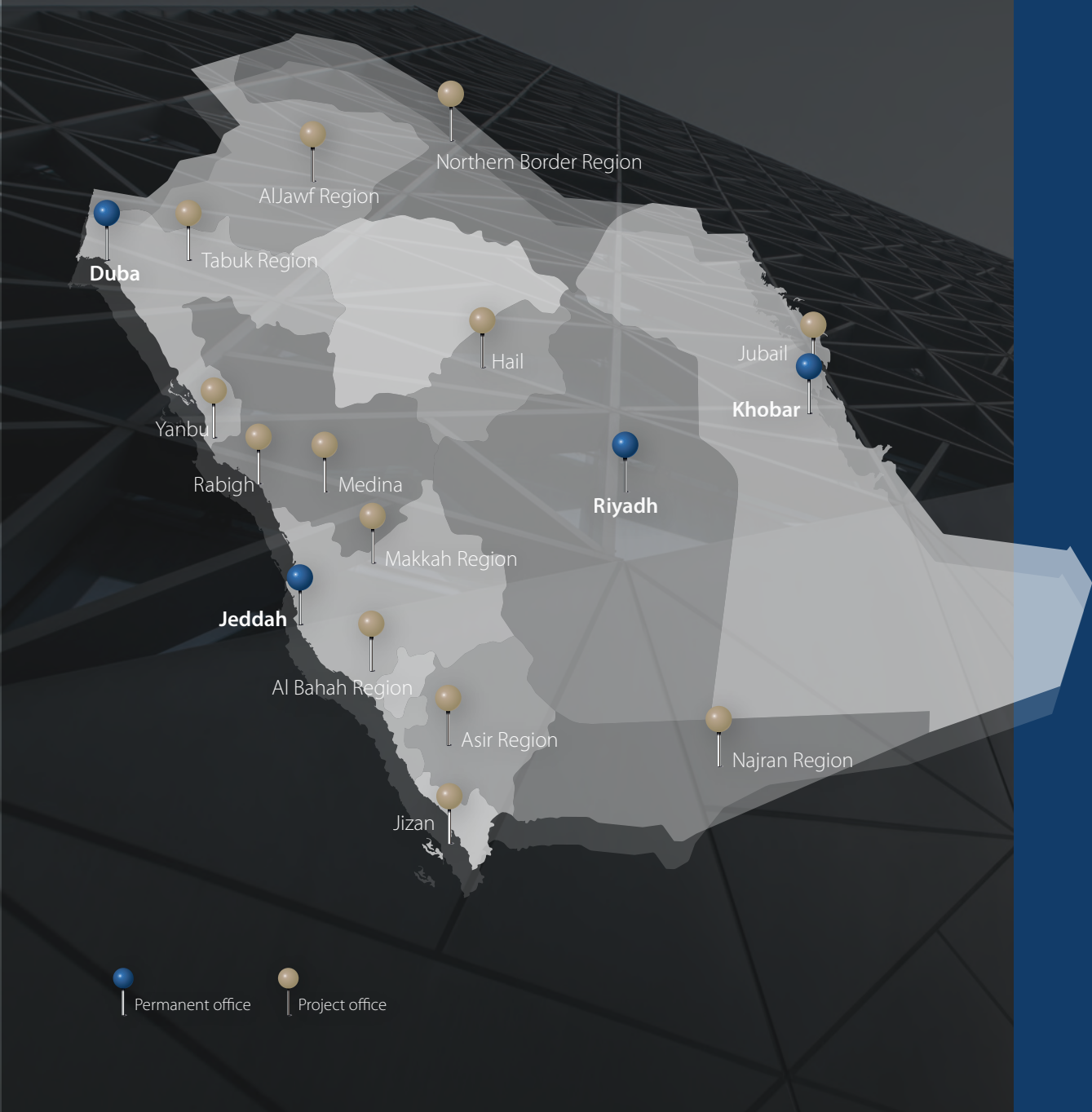
ISO 45001: 2018 - Occupational Health and Safety

ISO 9001: 2015 – Quality Management Systems

ISO 14001: 2015 – Environmental Management Systems



* Accredited HSEQ Systems



Presence Since
1975

49+
Years of Experience



100%
Saudi Owned



1000+
Specialists & Experts



40%
Saudization



48,5%
National Local Content

COMBINING LOCAL KNOWLEDGE WITH WORLD CLASS SKILLS





OUR PROJECTS



KING ABDULLAH FINANCIAL DISTRICT (KAFD)

Riyadh



Client

Alraidah Investment Company



Time frame

2009 - Ongoing



Scope of work

Construction Management Supervision



Project Highlights

One of the largest construction sites in the world with 60+ commercial towers & a total area of 3.5 M sqm. The area also includes space for retail, entertainment and hospitality surrounded by landscaped public areas all served by a modern light rail link.

DAR is managing 46 towers. DAR provides services through all phases of project implementation, from Construction Stage to Handover and Defects Liability Stages.











KING FAISAL AIR ACADEMY (KFAA)

Al Majma'ah



Client

Ministry of Defense



Time frame

2019 - 2023



Scope of work

Project Management Consultant (PMC)



Project Highlights

Scope includes the execution of all civil, structural, architectural, mechanical, electrical works including all associated public utilities networks to enable the operation of the Facilities

Specialist works covers runways, shooting range and technical studies related to specific purposes systems (such as airplanes fuel replenishing systems, aviation navigation and control systems, aviation simulators), environment studies and renewable power studies.







PMC SERVICES FOR SAUDI RAILWAYS ORGANIZATION(SRO)

Dammam, Al-Hassa and Riyadh



Client

Saudi Railways Organization, SRO



Time frame

2018 – Ongoing



Scope of work

Project Management Consultant (PMC)



Project Highlights

- Integrated team with SRO
- The scope includes Consulting & Technical engineering studies, Safety, RFP preparation and Construction Supervision
- Locations include Dammam, Al-Hassa and Riyadh area.







NATIONAL HOUSING COMPANY (NHC)

All Over the Kingdom



Client

National Housing Company (NHC)



Time frame

2022 – Ongoing



Scope of work

Supervision, Design, and PMC Services



Project Highlights

Design services, licensing, and engineering supervision on the commercial residential buildings implementation for the development housing sector of the National Housing Company





MINISTRY OF HOUSING PROGRAM

All Over the Kingdom



Client

Ministry of Housing



Time frame

2013 – Ongoing



Scope of work

Engineering & Architecture
Construction Management Supervision



Project Highlights

Total area 250 Million sqm covering:

- Master planning design
- Infrastructure design
- Landscape design
- Construction supervision























INFORMATION TECHNOLOGY & COMMUNICATIONS COMPLEX (ITCC)

Riyadh



Client

Alraidah Investment Company



Time frame

2009 – Ongoing



Scope of work

Construction Supervision



Project Highlights

Construction supervision of eleven buildings within the central area (hotels, leisure facilities, a convention center, residential apartments, a technical college as well as government service buildings)







JABAL OMAR Development

Makkah



Client

Jabal Omar Development Company



Time frame

2013 - Ongoing



Scope of work

Construction Management & Supervision



Project Highlights

Prestigious multi-use 5 Star destination in the center of Makkah-Al Mukarramah.

The project consists of several phases totaling a built-up area in the region of 1.9 Million m²

Scope includes:

- 4 Hotel Towers
- Permanent and Seasonal Residences
- Convention Facilities
- Commercial/Retail Areas
- Parking Garage







SAUDI INDUSTRIAL PROPERTY AUTHORITY (MODON)

Dammam, Jeddah, Sudair



Client

Saudi Industrial Property Authority (MODON)



Time frame

2015 – 2021



Scope of work

PMC & Construction Management



Project Highlights

Project Management and construction Management for 3rd industrial city Dammam, 3rd Industrial City Jeddah & Industrial City Sudair







MASTER PLAN & INFRASTRUCTURE DESIGN

Ras Alkhair



Client

Royal Commission Jubail



Time frame

2018 - 2023



Scope of work

Engineering & Architecture



Project Highlights

- Engineering Masterplan & architectural design projects, including primary & secondary infrastructure.
- Partnered with other renowned consultants to produce front-end engineering and feasibility studies for Jubail & Ras Al Khair Industrial Cities.





MISK SCHOOLS

Riyadh



Client

MISK



Time frame

2023 – 2024



Scope of work

Supervision Services



Project Highlights

DAR AL RIYADH has been appointed by Misk City Company to provide the Design Management and Supervision services for the delivery of the Riyadh Schools Boys' and Girls' Campuses located within the Misk City project.

The Riyadh Schools cover the entire range of primary and secondary education from kindergarten to 12th Grade, and will acknowledge both Saudi traditions and a modern global outlook.

The Girls' Campus, with a GFA of 37,000 square meters, will consist of 1 basement, 3 upper levels and landscaping, while the Boys' Campus will have a GFA of 30,900 square meters built on the same configuration.

The development also includes hubs that will support the mobility strategy devised for the company in the Misk City master-plan. They consist of parking structures that will be built on three separate plots, housing over 1,700 parking spaces on G+4 structures for a total GFA of over 110,000 square meters.







KNOWLEDGE ECONOMIC CITY HUB

Madinah



Client

Knowledge Economic City (KEC)



Time frame

2023 – 2025



Scope of work

Construction Supervision



Project Highlights

Considered the largest in the city of Madinah, this integrated center includes a commercial complex, a Hilton hotel, a luxurious residential tower, entertainment centers for children and adults, a sports health club and a boulevard located on both sides of modern restaurants and cafes. The project also includes wide pedestrian squares and a public park.







AL RIMAL COMMUNITY MASTER PLANNING PROJECT

Riyadh



Client

General Organization Social Insurance



Time frame

2013 - 2021



Scope of work

Engineering & Architecture
Construction Supervision



Project Highlights

- 670,000 sqm mixed use development
- Master planning design
- Architectural design inclusive of hotel, serviced
- Apartments , villas , private and communal
- Pools and sports center
- Infrastructure design
- Full world class resort style landscape design
- Construction supervision















MINISTRY OF CULTURE HQ

Riyadh



Client

Diriyah Gate Development Authority (DGDA)



Time frame

2020 - 2023



Scope of work

Design Services



Project Highlights

- Multi- Disciplinary Consultancy Services for Ministry of Culture HQ















COASTAL VILLAGE

Red Sea



Client

The Red Sea Development (TRSDC)



Time frame

2021 - 2022



Scope of work

Construction Supervision



Project Highlights

Construction Supervision Services for the construction of the Coastal Village. The Coastal Village is providing living, visiting, working, and recreational facilities for the senior management staff under TRSDC as well as its consultants, contractors, and other vendors participating in The Red Sea Project. It incorporates the latest concepts in co-working and community living spaces, enabling the residents, visitors and their family members to interact and collaborate in a variety of comfortable public spaces for both work and recreation.







ROSHN REAL ESTATE

All Over the Kingdom



Client

Roshn Real Estate



Time frame

2022 - Ongoing



Scope of work

Design Services



Project Highlights

Title Deed Issuance Framework Agreement Across the Kingdom







P&C OF SECURITY FORCES AND RC INDUSTRIAL SECURITY FACILITIES AT RIC (148-C01)

Ras Alkhair



Client

Royal Commission



Time frame

2015 - 2017



Scope of work

Detailed Engineering Design



Project Highlights

RC Industrial Security Admin Building

1. Ground Floor – Reception, Security coordination/patrols room, Security department, Investigation department, Training, Govt. Relations, Security Surveying, Safety Department, Fire Protection
2. First Floor – Key Administration, Emergency & Telecoms, Services, Prayer Hall
3. Mezzanine – Large Conference Room leading to external terrace.
4. Basement level - Operations Room
 - Fiber Network connection to entire RIC site development
 - Switch room for 5 stations / Telecom system
 - UPS
 - Locker room, rest rooms, kitchen, showers & wcs
 - Large conference room for 20 people with supervisors office. Must have window into switch room
 - Managers Office
 - Large screen video wall for 20 monitors to monitor RIC externally, including desk monitors with raised access floor.





49 Years of Serving Saudi Clients



 الشركة السعودية للكهرباء Saudi Electricity Company					
 طيبة للاستثمار TAIBA INVESTMENTS	 البنك السعودي الهولندي Saudi Hollandi Bank		 بترو رابغ Petro Rabigh	 LIVE THE LUXURY	 المراكز العربية Arabian Centres
 الزامل للصلب ZAMIL STEEL	 السلام لصناعة الطيران ALSALAM AEROSPACE INDUSTRIES	 سيدكو SIDCO	 Nesma وشركاهم & Partners	 مؤسسة سلطان بن عبد العزيز آل سعود الخيرية SULTAN BIN ABDULAZIZ AL-SAUD FOUNDATION	
 مصانع الشرق AL SHARQ FACTORIES	 مستشفى الملك فيصل التخصصي ومركز الأبحاث King Faisal Specialist Hospital & Research Centre	 صدارة Sadara	 بيتك baitek	 سلطة الطيران المدني SUDAN CAA	 موبايلي Mobily
 شركة الرياض التطوير AR RYADH DEVELOPMENT CO.	 وزارة المياه والكهرباء MINISTRY OF WATER & ELECTRICITY	 معادن MA'ADEN	 Human Resources and Social Development	 وزارة الاتصالات وتقنية المعلومات MINISTRY OF COMMUNICATIONS AND INFORMATION TECHNOLOGY	



d a r a l r i y a d h . c o m